



**SIMPLY PROFITABLE  
IMMENSELY INTELLIGENT**

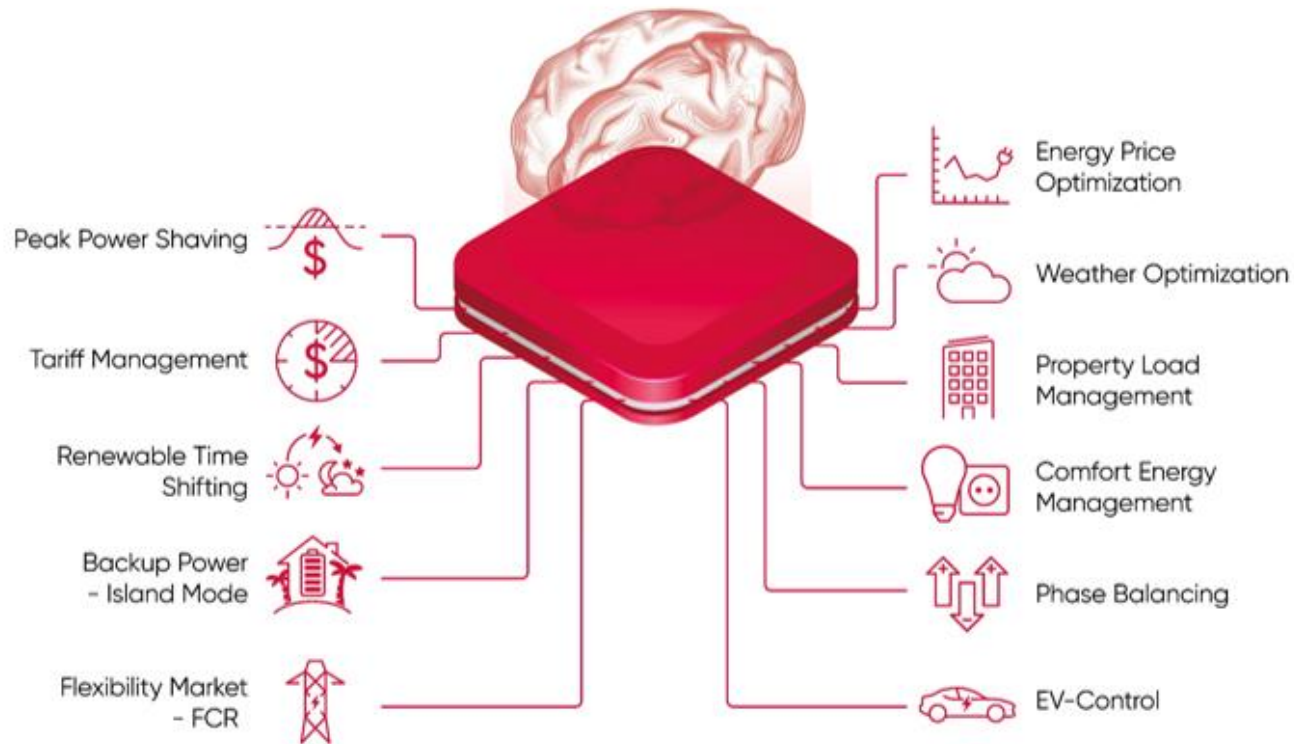


# Enequi Core setup



# The Enequi QuiPower platform

## The QuiPower Intelligence



### Our QuiPower platform

- The intelligence of QuiPower and the complete platform are unique in the market.
- The system has its own brain (QuiPower Core) that ensures you get a **safer and cheaper** energy supply – completely automated.
- With our proprietary QuiPower nodes, the system can control end-points and optimize utilization.
- The off-grid solution is beneficial in unstable grid systems.

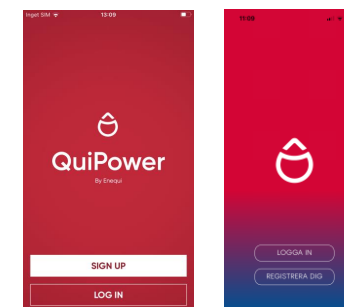
QuiPower is an **integrated and comprehensive system** for energy storage that is equipped for the future. Thanks to aggregated data from weather forecasts, electricity prices of both today and tomorrow, household consumption patterns and predicted consumption, QuiPower delivers unbeatable benefits.

The solution is both for private and commercial properties.

Enequi has **a method patent** which means that the method in which our software operates is protected. The patent is valid in selected parts of Europe and the USA.

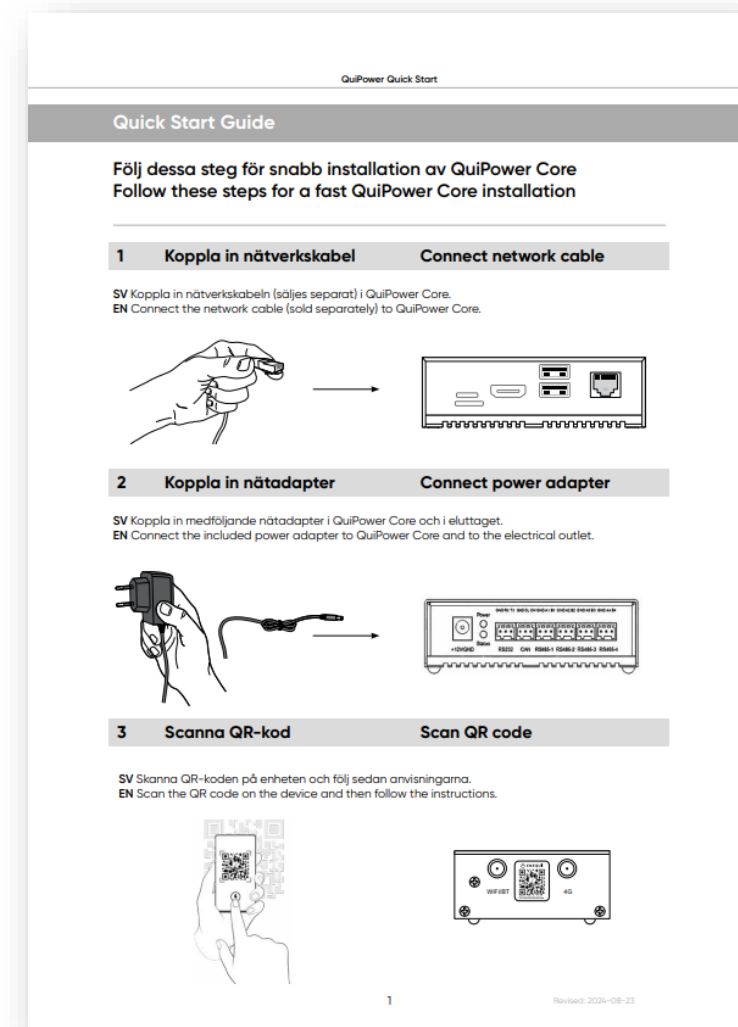
## Before setup

- Installer
  - QuiPower Core
  - QuiPower Bridge
  - QuiPower Node
  - Smart phone
  - QuiPower Node App
  - Core Installer App
  
- End user
  - Smart phone
  - QuiPower Node App
  - QuiPower App



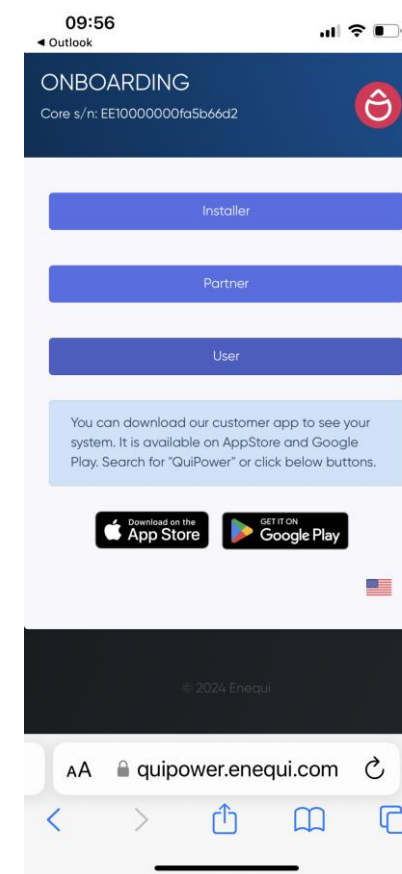
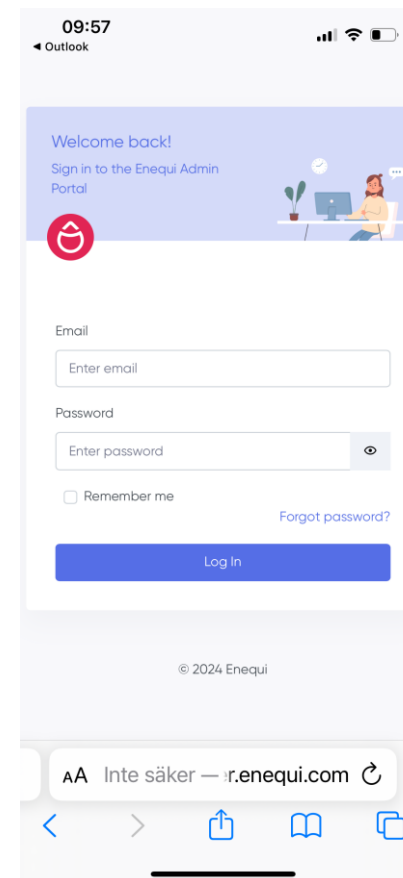
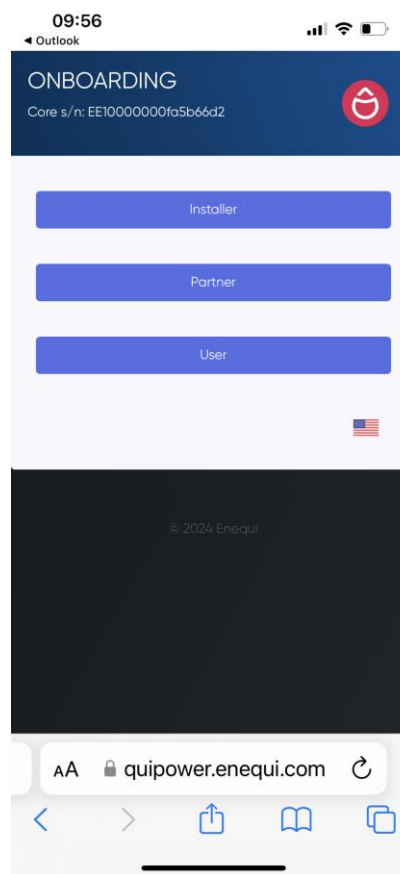
# Quick start guide

- Installer
  - Unpack Core device
  - Install it by using wall brackets ( included ) or DIN-rail holder ( not included )
  - Connect network cable ( not included )
  - Connect power adapter ( included )
  - Scan QR code



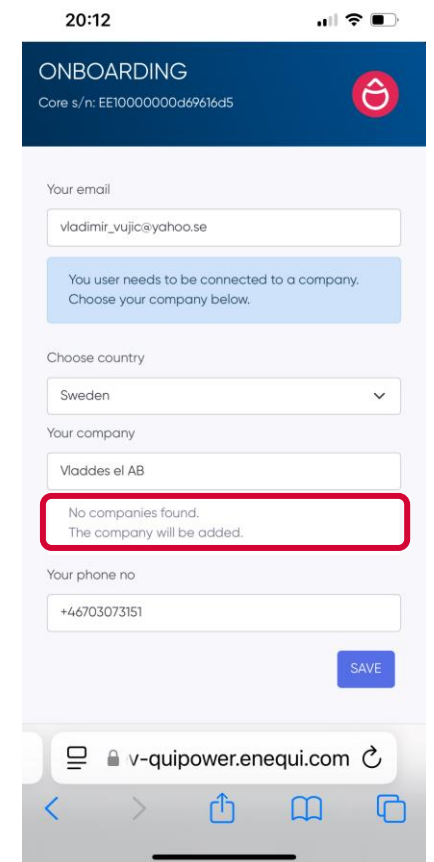
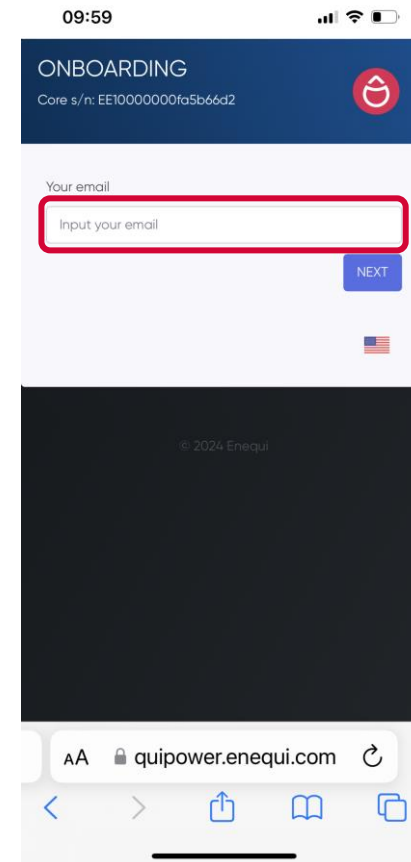
# Onboarding

- Tap on Installer button or
- Choose Partner if you have partner login credentials
- Choose User to download QuiPower app



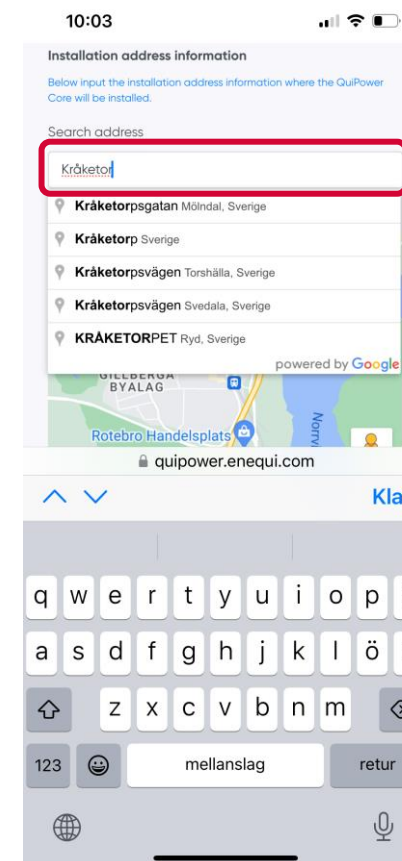
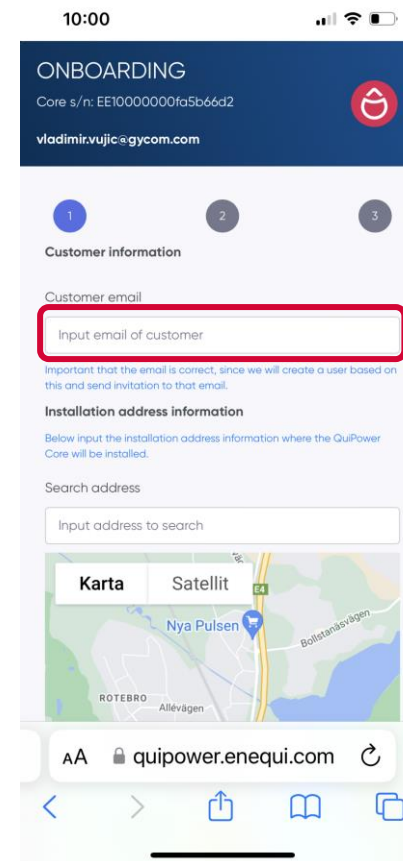
# Onboarding

- Installer
  - Input your email and tap NEXT
  - First time installer?  
Register company and tap SAVE



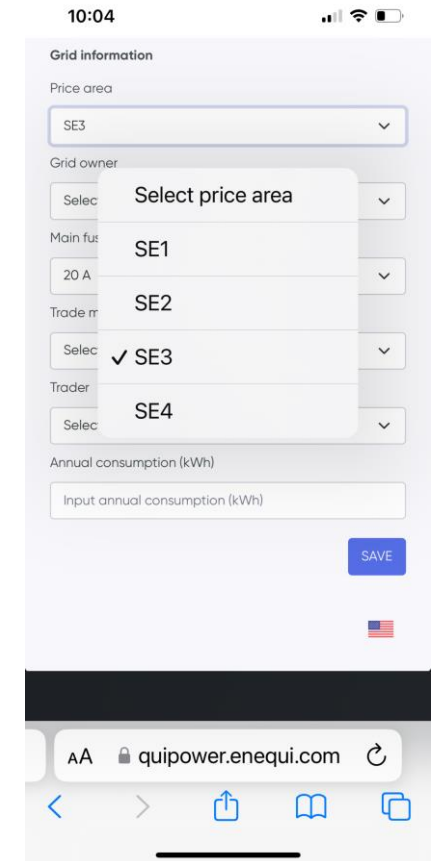
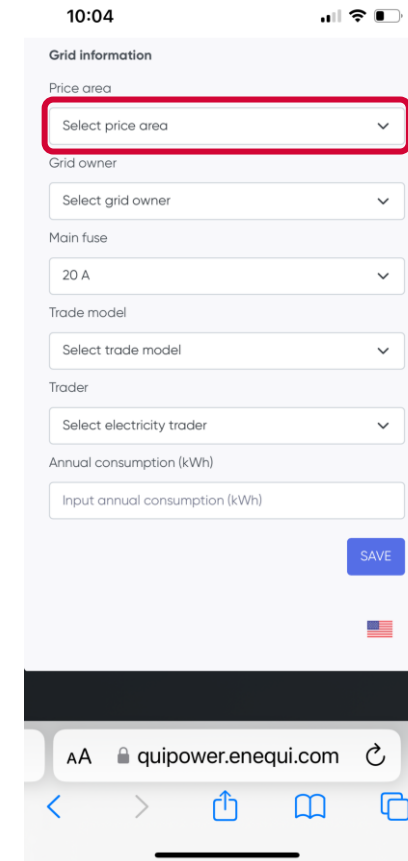
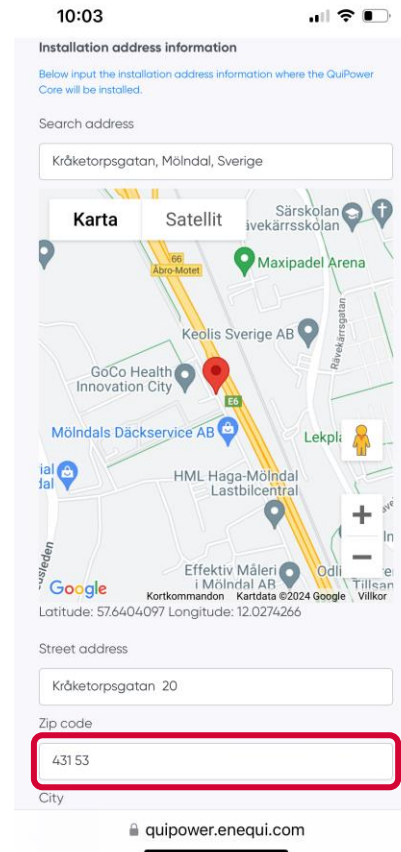
# Onboarding

- Installer
  - Input end user email  
Important: for end user to get system invitation
  - Input address where Core is installed



# Onboarding

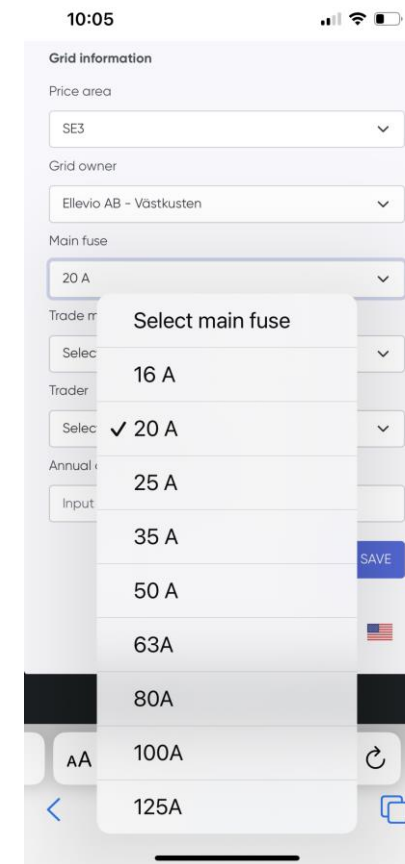
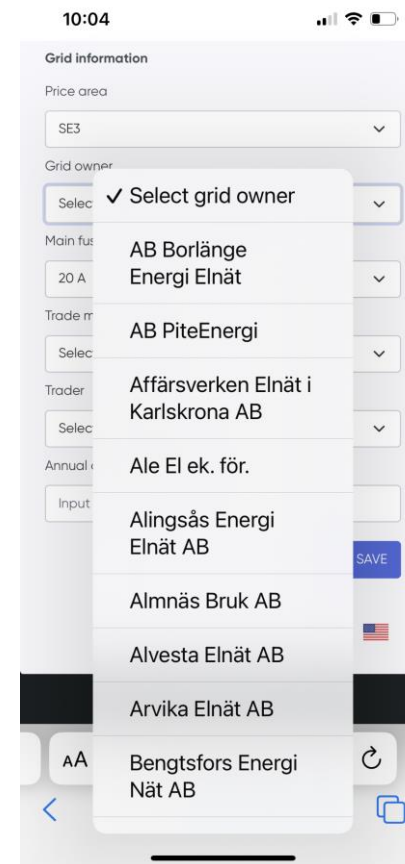
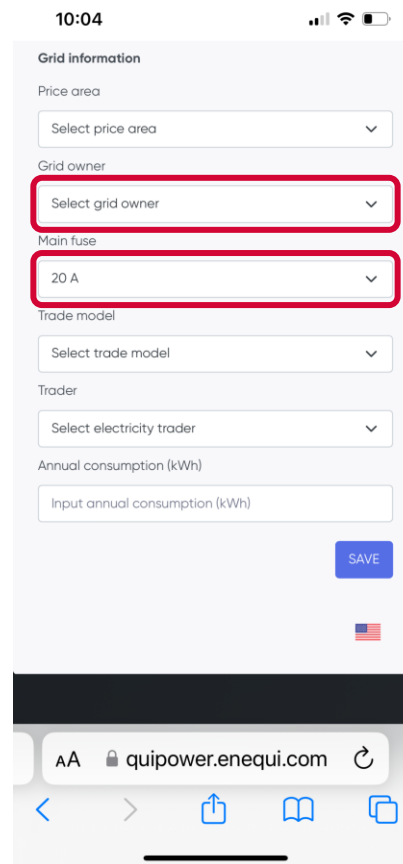
- Installer
  - Remember Zip code to enable future changes in onboarding process
  - Select price area  
Important: for correct day-ahead price optimization



# Onboarding

- Installer

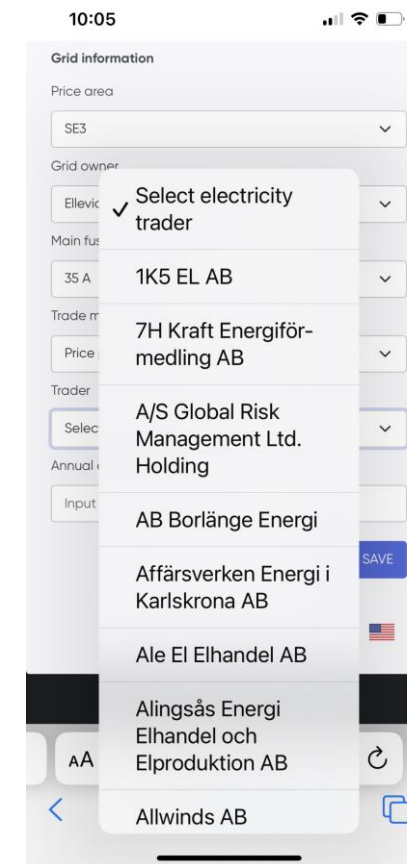
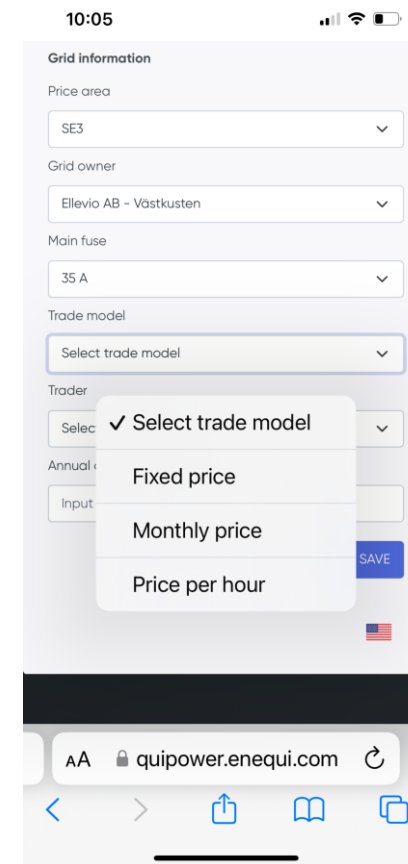
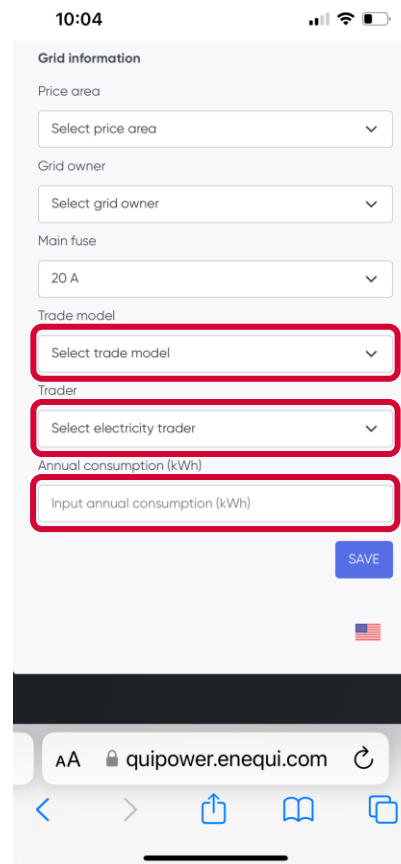
- Select grid owner  
Important: for correct tariff and grid fees settings
- Select main fuse  
Important: for correct main fuse protection, charging interval calculations and load balancing



# Onboarding

- End user

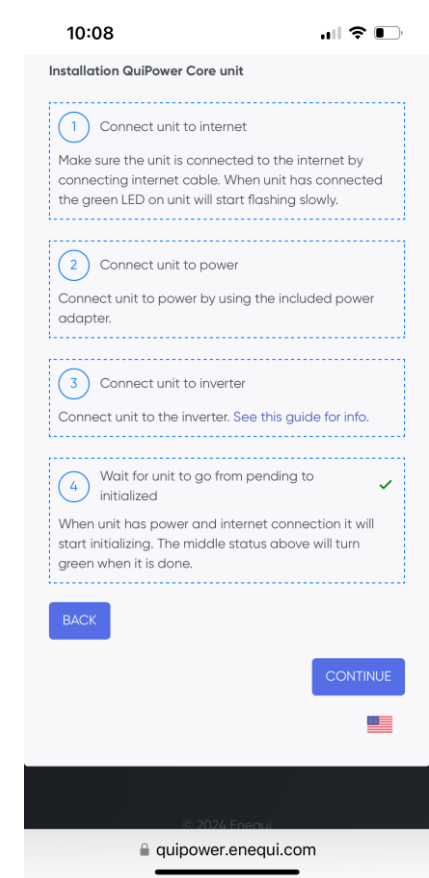
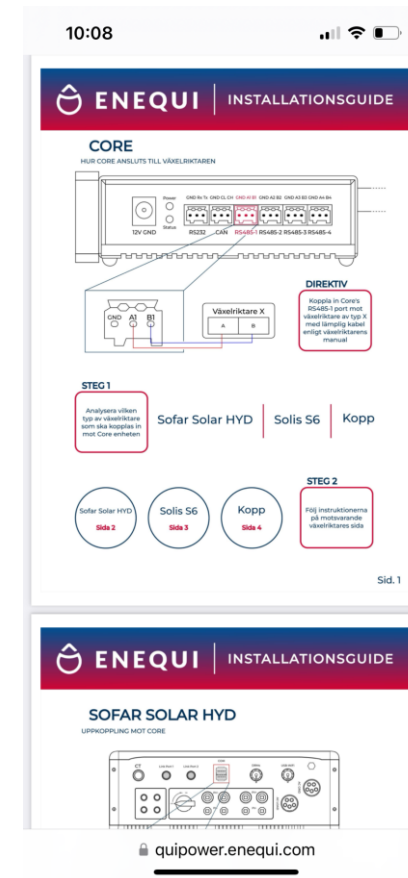
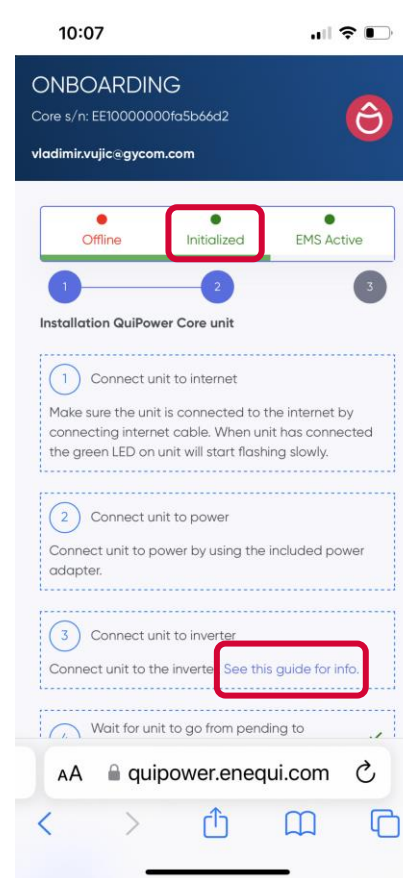
- Select trade model  
Important: for correct activation of day-ahead price optimization
- Select electricity trader  
Important: for correct activation of day-ahead price optimization
- Input annual consumption – kWh  
Important: for correct power peak calculation
- Tap SAVE



# Onboarding

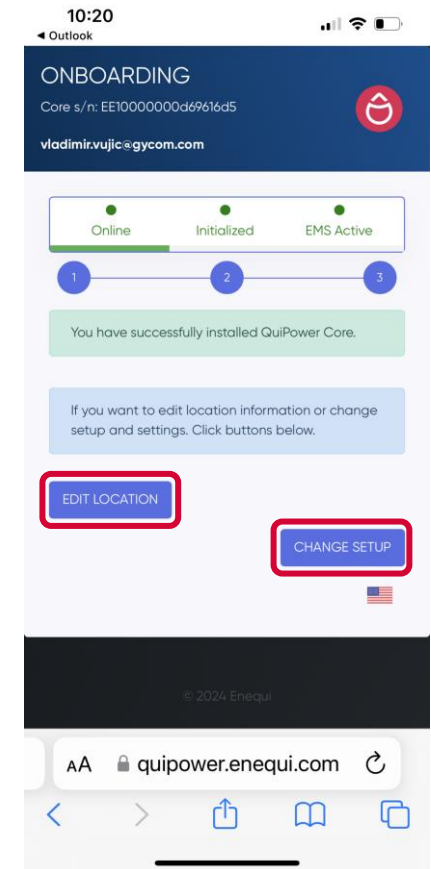
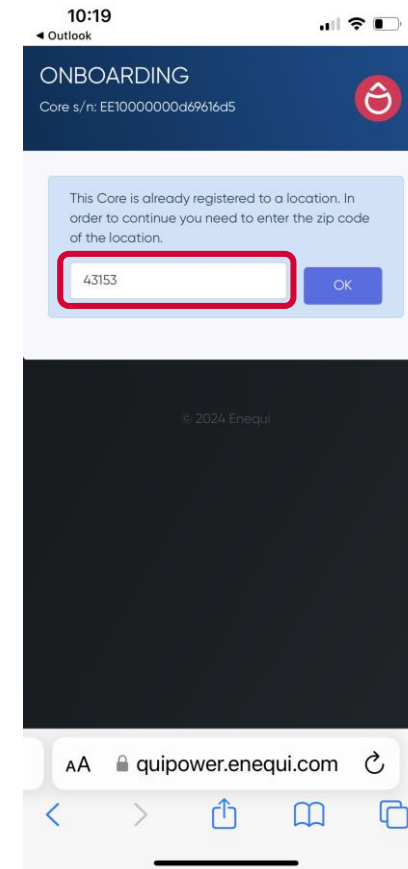
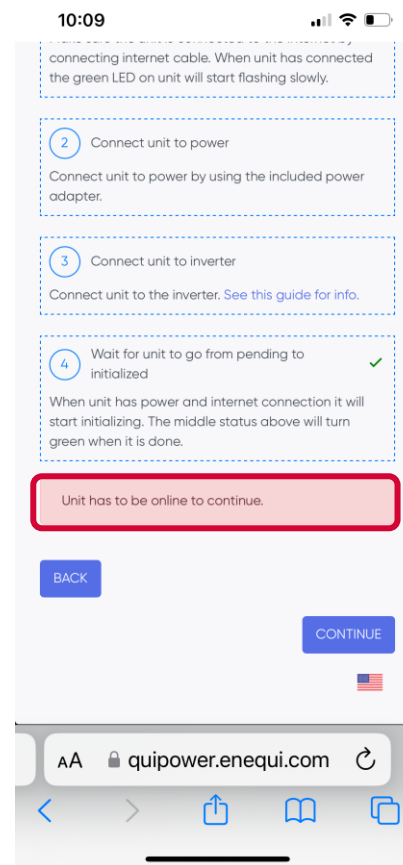
## ■ Installer

- Connect Core unit to inverter
- See guide for wiring information
- Wait for unit to go from pending to initialized
- Tap CONTINUE



# Onboarding

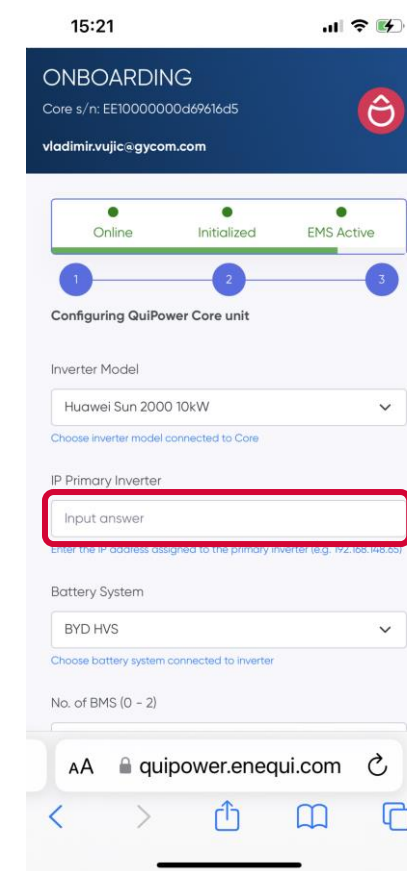
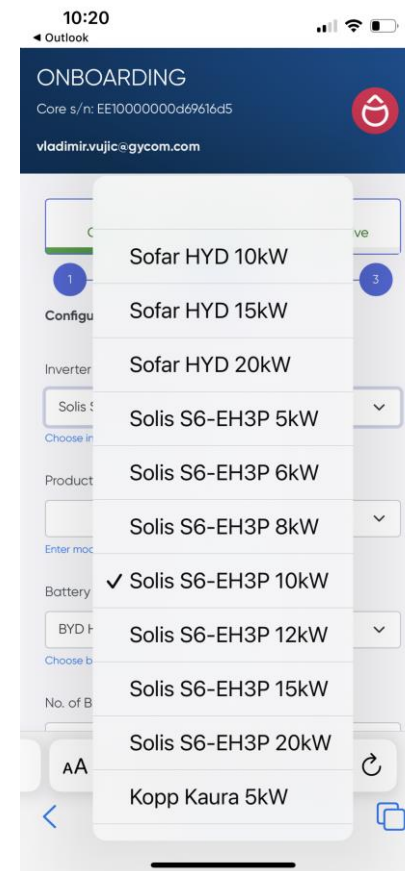
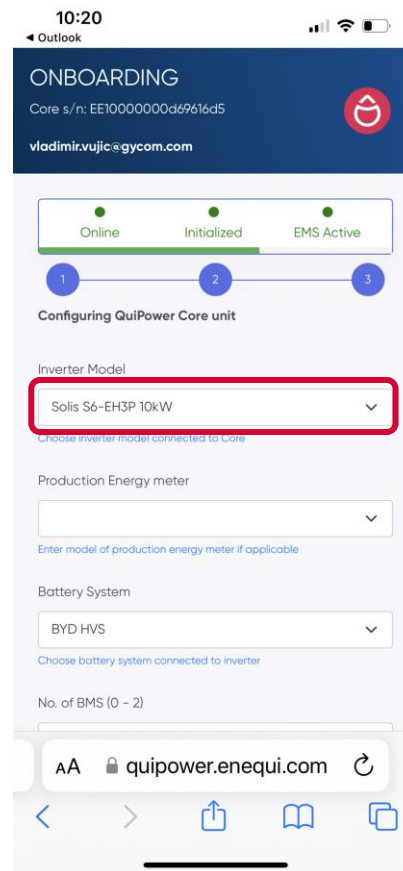
- Installer
  - To continue with onboarding process, Core unit must be online
  - Use zip code to log in again and change onboarding information
  - Tap EDIT LOCATION or CHANGE SETUP to change onboarding information



# Onboarding

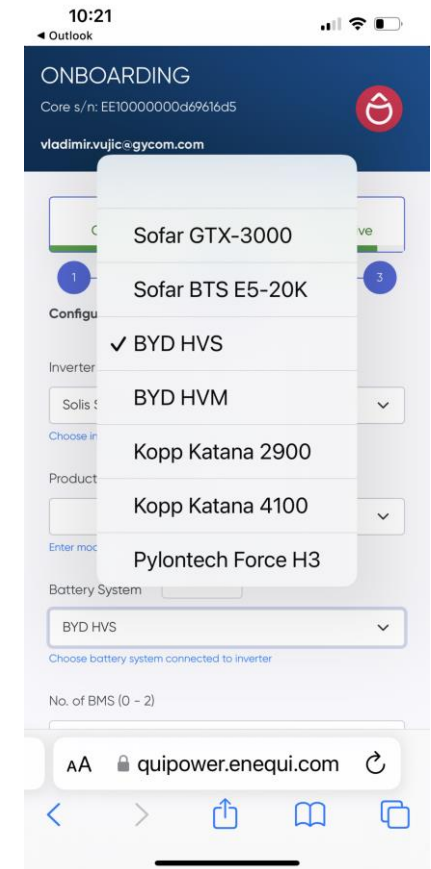
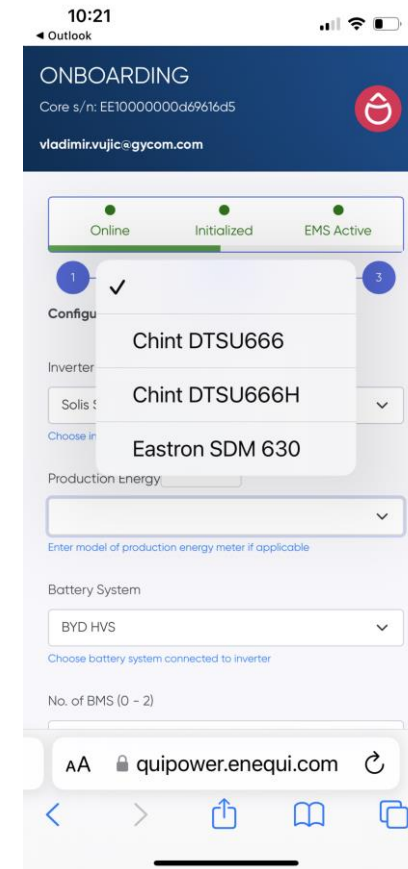
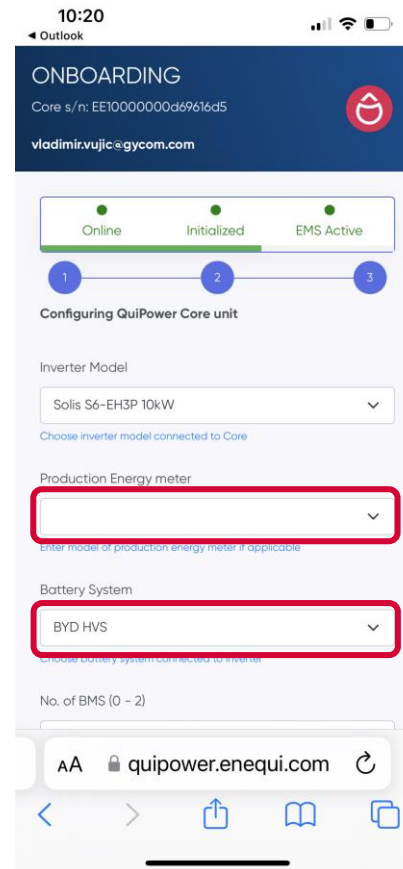
## ■ Installer

- Choose inverter model connected to Core
- For RS485 connected inverter set correct inverter ID-address and enable Modbus communication in inverter Communication menu. See wiring guide for address information.
- For TCP/IP connected inverter set correct inverter IP-address for primary inverter. See inverter network menu for address information and enable Modbus communication. Inverter and Core must be connected to same LAN-network or advanced subnet routing should be setup. Recommended is to use static IP address on inverter.



# Onboarding

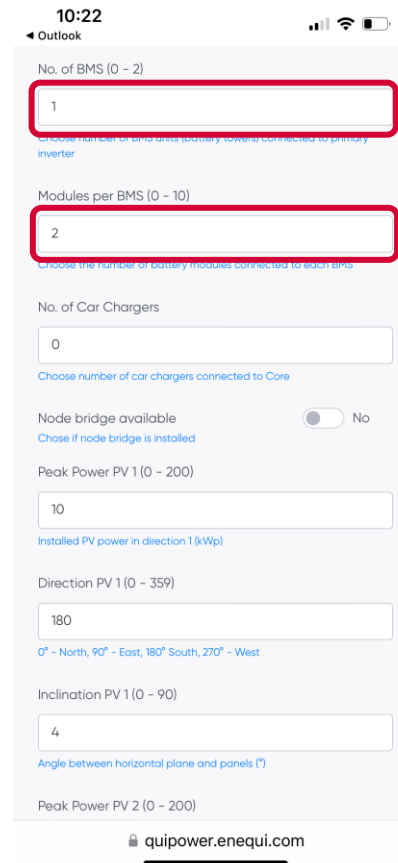
- Installer
  - Choose production energy meter in case of retrofit installation and if additional inverters are present in same installation. See [retrofit installation](#) section
  - Choose battery system type  
Important: for capacity and charging intervals calculation



# Onboarding

## ■ Installer

- Choose number of battery inputs used on primary inverter  
Important: for capacity and charging intervals calculation
- Choose number of battery modules connected to each battery input.  
Important: for capacity and charging intervals calculation  
All battery inputs must have same number of battery modules
- Choose number of TCP/IP connected car chargers to Core unit
- For TCP/IP connected car charger set correct car charger IP-address. See car charger network menu for address information and enable Modbus communication . Car charger and Core must be connected to same LAN-network or advanced subnet routing should be setup. Recommended is to use static IP address on car charger.



10:22  
Outlook

No. of BMS (0 - 2)  
1

Choose number of BMS units (primary inverter) connected to primary inverter

Modules per BMS (0 - 10)  
2

Choose the number of battery modules connected to each BMS

No. of Car Chargers  
0

Choose number of car chargers connected to Core

Node bridge available  No  
Choose if node bridge is installed

Peak Power PV 1 (0 - 200)  
10

Installed PV power in direction 1 (kWp)

Direction PV 1 (0 - 359)  
180

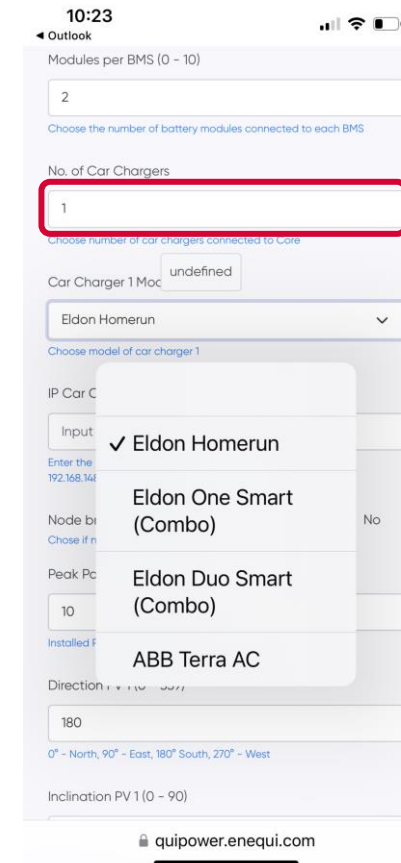
0° - North, 90° - East, 180° South, 270° - West

Inclination PV 1 (0 - 90)  
4

Angle between horizontal plane and panels (\*)

Peak Power PV 2 (0 - 200)

quipower.enequi.com



10:23  
Outlook

Modules per BMS (0 - 10)  
2

Choose the number of battery modules connected to each BMS

No. of Car Chargers  
1

Choose number of car chargers connected to Core

Car Charger 1 Model  
undefined

Choose model of car charger 1

IP Car C  
Input

Enter the IP address assigned to Car Charger number 1 (e.g. 192.168.148.203)

Node bridge available  No  
Choose if node bridge is installed

Peak Power PV 1 (0 - 200)  
10

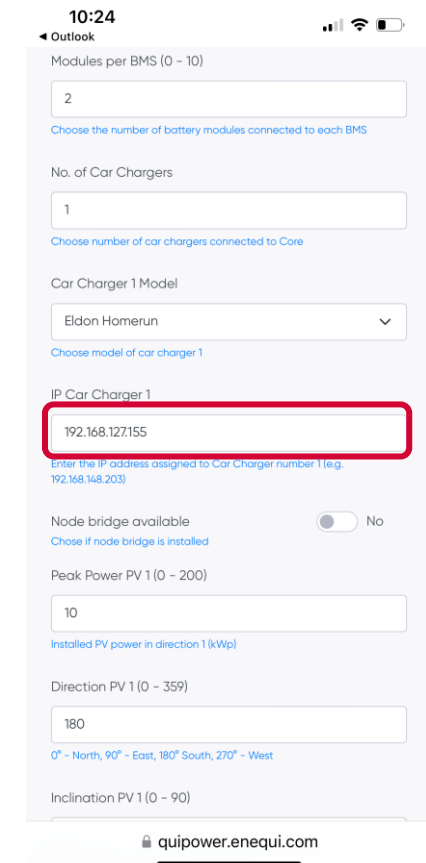
Installed PV power in direction 1 (kWp)

Direction PV 1 (0 - 359)  
180

0° - North, 90° - East, 180° South, 270° - West

Inclination PV 1 (0 - 90)

quipower.enequi.com



10:24  
Outlook

Modules per BMS (0 - 10)  
2

Choose the number of battery modules connected to each BMS

No. of Car Chargers  
1

Choose number of car chargers connected to Core

Car Charger 1 Model  
Eldon Homerun

Choose model of car charger 1

IP Car Charger 1  
192.168.127.155

Enter the IP address assigned to Car Charger number 1 (e.g. 192.168.148.203)

Node bridge available  No  
Choose if node bridge is installed

Peak Power PV 1 (0 - 200)  
10

Installed PV power in direction 1 (kWp)

Direction PV 1 (0 - 359)  
180

0° - North, 90° - East, 180° South, 270° - West

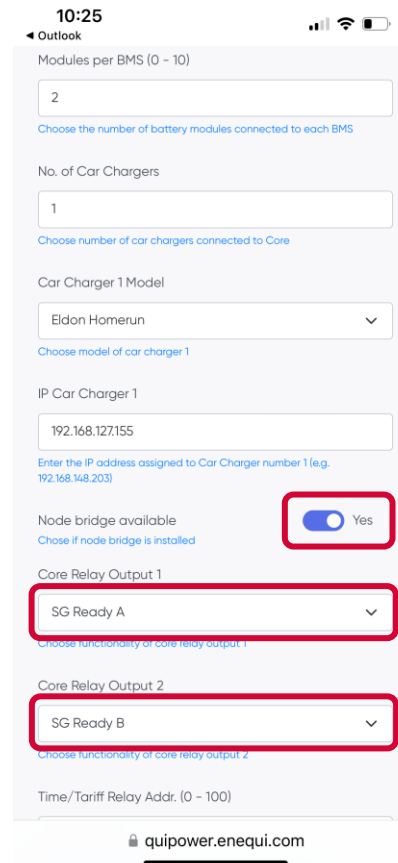
Inclination PV 1 (0 - 90)

quipower.enequi.com

# Onboarding

## ■ Installer

- Enable QPN-bridge if QPN mesh system is used. See [QPN mesh](#) section for setup information
- They are four predefined **Automated scenes** between Core unit and mesh system. Two of Automated scenes have predefined functions, **Time and Tariff** and **Day-ahead Price Optimization**. See [QPN mesh](#) section for function description
- Two of Automated scenes have optional functions, **Core Relay Output1** and **Core Relay Output2**. Choose desired function from dropdown list. See [Automated scene function description](#) section
- One QuiPower Node in each automated scene can be monitored for functionality with increased safety. Set **Unicast Address** for QPN that should be monitored in each automated scene. See [QPN Unicast Address](#) section for monitoring description



10:25  
Outlook

Modules per BMS (0 - 10)  
2  
Choose the number of battery modules connected to each BMS

No. of Car Chargers  
1  
Choose number of car chargers connected to Core

Car Charger 1 Model  
Eldon Homerun  
Choose model of car charger 1

IP Car Charger 1  
192.168.127.155  
Enter the IP address assigned to Car Charger number 1 (e.g. 192.168.148.203)

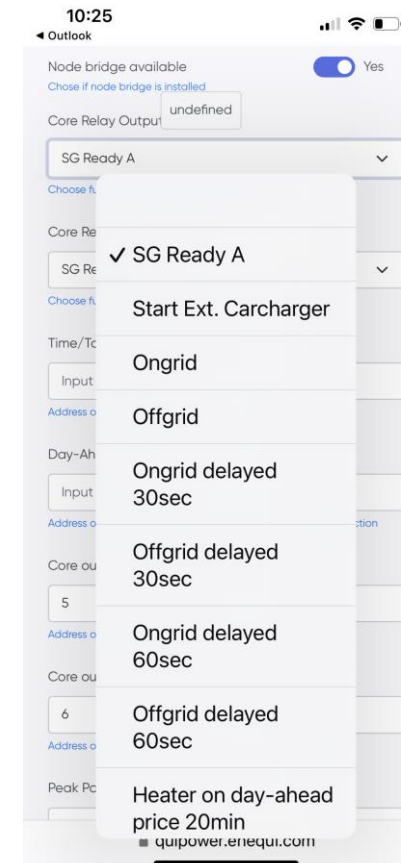
Node bridge available  
Chose if node bridge is installed  
 Yes

Core Relay Output 1  
SG Ready A  
Choose functionality of core relay output 1

Core Relay Output 2  
SG Ready B  
Choose functionality of core relay output 2

Time/Tariff Relay Addr. (0 - 100)

quipower.enequi.com



10:25  
Outlook

Node bridge available  
Chose if node bridge is installed  
 Yes

Core Relay Output 1  
SG Ready A  
Choose functionality of core relay output 1

Core Relay Output 2  
SG Ready B  
Choose functionality of core relay output 2

Time/Tariff Relay Addr. (0 - 100)  
Input number  
Address of bluetooth relay connected to time/tariff function

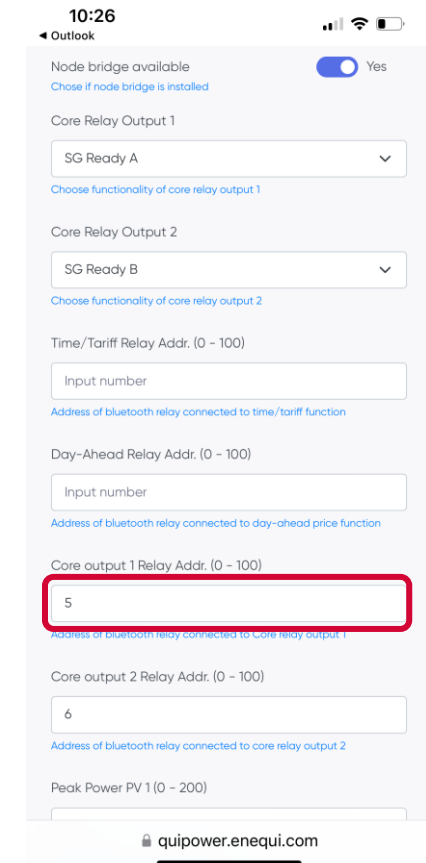
Day-Ahead Relay Addr. (0 - 100)  
Input number  
Address of bluetooth relay connected to day-ahead price function

Core output 1 Relay Addr. (0 - 100)  
5  
Address of bluetooth relay connected to Core relay output 1

Core output 2 Relay Addr. (0 - 100)  
6  
Address of bluetooth relay connected to core relay output 2

Peak Power PV 1 (0 - 200)

quipower.enequi.com



10:26  
Outlook

Node bridge available  
Chose if node bridge is installed  
 Yes

Core Relay Output 1  
SG Ready A  
Choose functionality of core relay output 1

Core Relay Output 2  
SG Ready B  
Choose functionality of core relay output 2

Time/Tariff Relay Addr. (0 - 100)  
Input number  
Address of bluetooth relay connected to time/tariff function

Day-Ahead Relay Addr. (0 - 100)  
Input number  
Address of bluetooth relay connected to day-ahead price function

Core output 1 Relay Addr. (0 - 100)  
5  
Address of bluetooth relay connected to Core relay output 1

Core output 2 Relay Addr. (0 - 100)  
6  
Address of bluetooth relay connected to core relay output 2

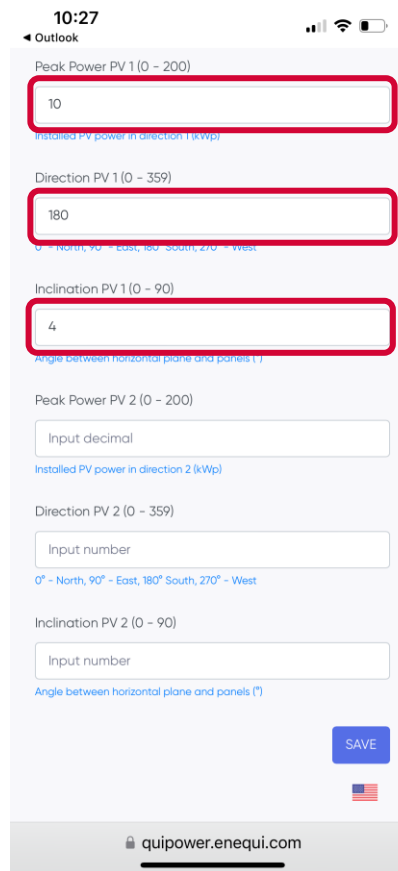
Peak Power PV 1 (0 - 200)

quipower.enequi.com

# Onboarding

## Installer

- Set peak power, direction and inclination for PV installation. Three different PV setups are available. Important: for charging intervals calculation and day-ahead price optimization. See [PV setup](#) section for settings description
- Tap on SAVE to send invitation to end user
- Control EMS status
- Control EMS received data



10:27  
Outlook

Peak Power PV 1 (0 - 200)  
10  
Installed PV power in direction 1 (kWp)

Direction PV 1 (0 - 359)  
180  
0° - North, 90° - East, 180° South, 270° - West

Inclination PV 1 (0 - 90)  
4  
Angle between horizontal plane and panels (°)

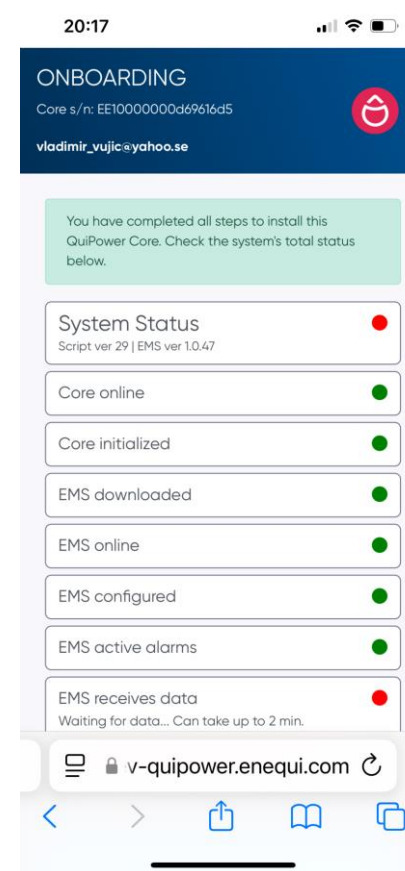
Peak Power PV 2 (0 - 200)  
Input decimal  
Installed PV power in direction 2 (kWp)

Direction PV 2 (0 - 359)  
Input number  
0° - North, 90° - East, 180° South, 270° - West

Inclination PV 2 (0 - 90)  
Input number  
Angle between horizontal plane and panels (°)

SAVE

quipower.enequi.com



20:17

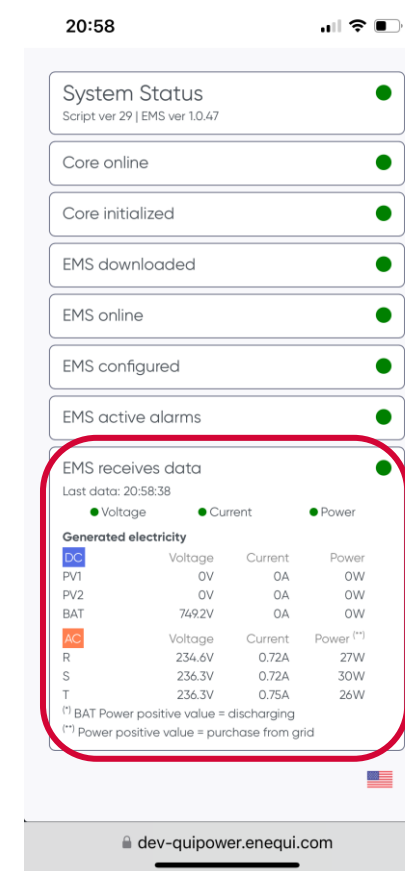
ONBOARDING  
Core s/n: EE1000000d69616d5  
vladimir\_vujic@yahoo.se

You have completed all steps to install this QuiPower Core. Check the system's total status below.

System Status  
Script ver 29 | EMS ver 1.0.47

- Core online
- Core initialized
- EMS downloaded
- EMS online
- EMS configured
- EMS active alarms
- EMS receives data  
Waiting for data... Can take up to 2 min.

v-quipower.enequi.com



20:58

System Status  
Script ver 29 | EMS ver 1.0.47

- Core online
- Core initialized
- EMS downloaded
- EMS online
- EMS configured
- EMS active alarms
- EMS receives data  
Last data: 20:58:38  
Voltage Current Power

Generated electricity

DC	Voltage	Current	Power
PV1	0V	0A	0W
PV2	0V	0A	0W
BAT	7492V	0A	0W

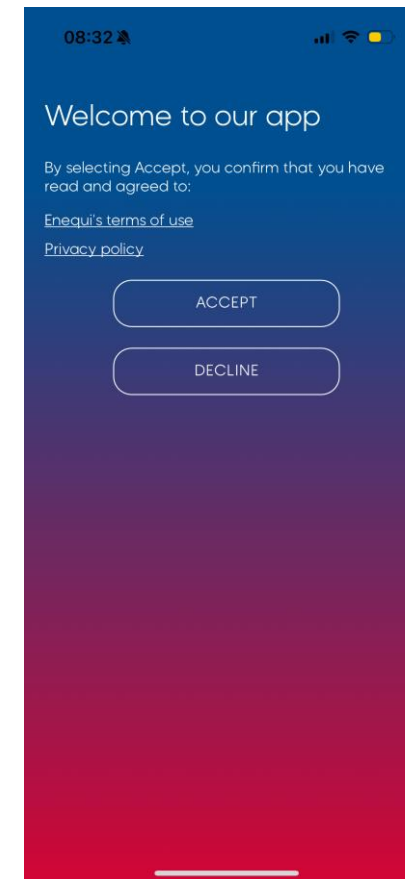
AC	Voltage	Current	Power (*)
R	234.6V	0.72A	27W
S	236.3V	0.72A	30W
T	236.3V	0.75A	26W

(\*) BAT Power positive value = discharging  
(\*) Power positive value = purchase from grid

dev-quipower.enequi.com

## Onboarding

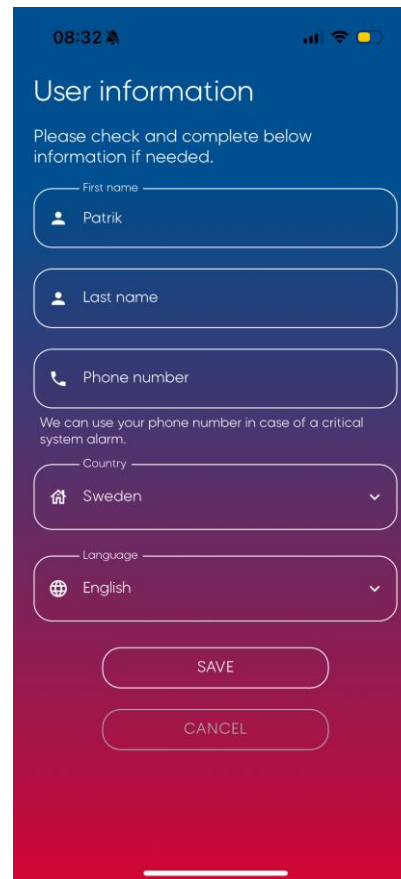
- Installer
  - Inform end customer to register account and finish onboarding process



# Onboarding

- End user

- Verify and complete user information
- Verify and complete location information
- Select contract type  
Important: for correct activation of day-ahead price optimization
- Select electricity trader  
Important: for correct activation of day-ahead price optimization
- Input annual consumption – kWh  
Important: for correct power peak calculation
- Tap SAVE to finish onboarding process and overview system



08:32

## User information

Please check and complete below information if needed.

First name  
Patrik

Last name

Phone number

We can use your phone number in case of a critical system alarm.

Country  
Sweden

Language  
English

SAVE

CANCEL



08:35

## Location information

The location is where you have your QuiPower Core installed. We need your address to optimize our AI-driven energy management solution.

Please check and complete below information if needed.

Name of location  
Landet

Street address  
Stenvägen

Zip code  
17800

City  
Ekerö

Country  
Sweden

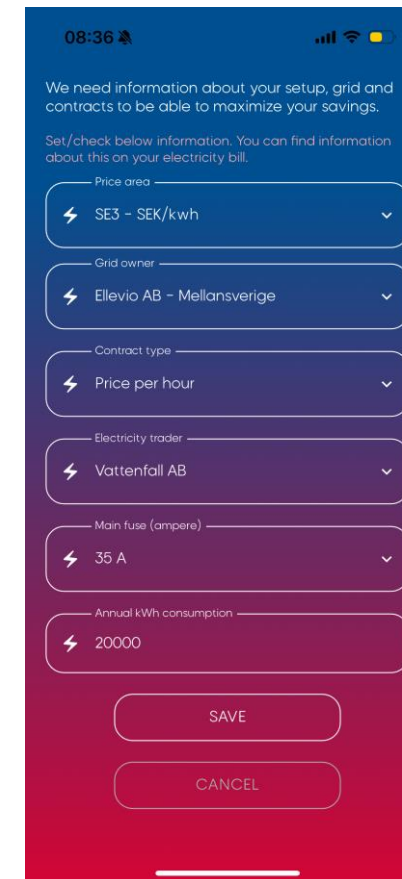
We need information about your setup, grid and contracts to be able to maximize your savings.

Set/check below information. You can find information about this on your electricity bill.

Price area  
SE3 - SEK/kwh

SAVE

CANCEL



08:36

We need information about your setup, grid and contracts to be able to maximize your savings.

Set/check below information. You can find information about this on your electricity bill.

Price area  
SE3 - SEK/kwh

Grid owner  
Ellevio AB - Mellansverige

Contract type  
Price per hour

Electricity trader  
Vattenfall AB

Main fuse (ampere)  
35 A

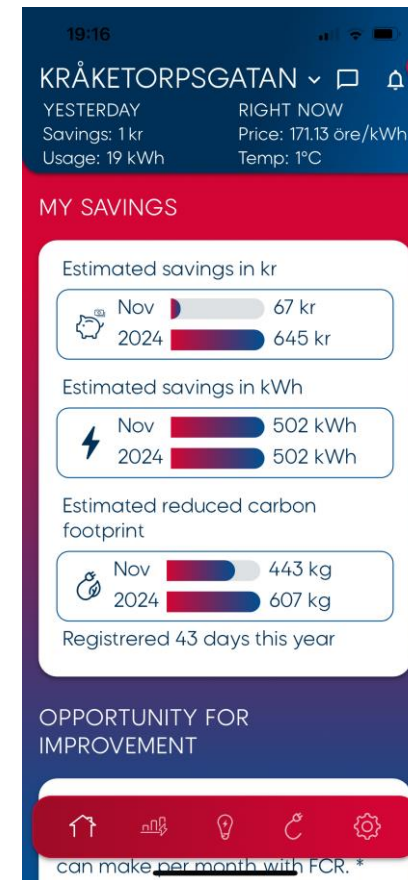
Annual kWh consumption  
20000

SAVE

CANCEL

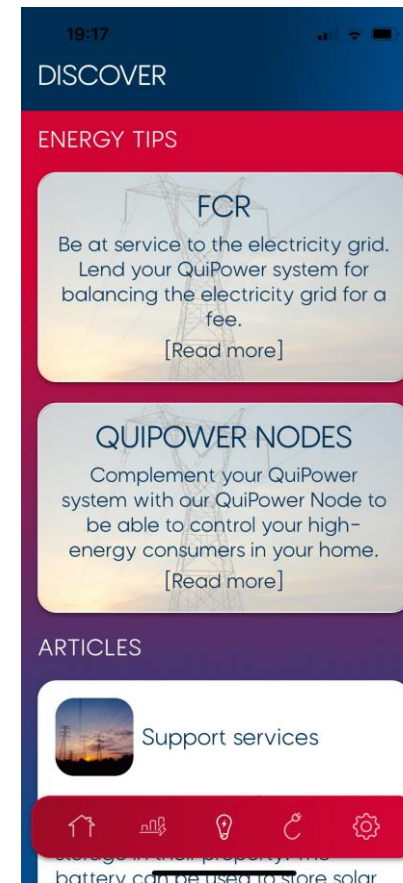
# QuiPower app

- End user
  - Use menu icons in red banner to switch between screens
  - Scroll up and down to access more information



# QuiPower app

- End user
  - INSIGHTS offers historical data of your system with comparison functions
  - DISCOVER offers new services and components to your system
  - MY DEVICES enables possibility to control other cloud connected devices in your system  
See [My devices](#) section for connect instructions

19:17

DISCOVER

ENERGY TIPS

FCR

Be at service to the electricity grid. Lend your QuiPower system for balancing the electricity grid for a fee. [Read more]

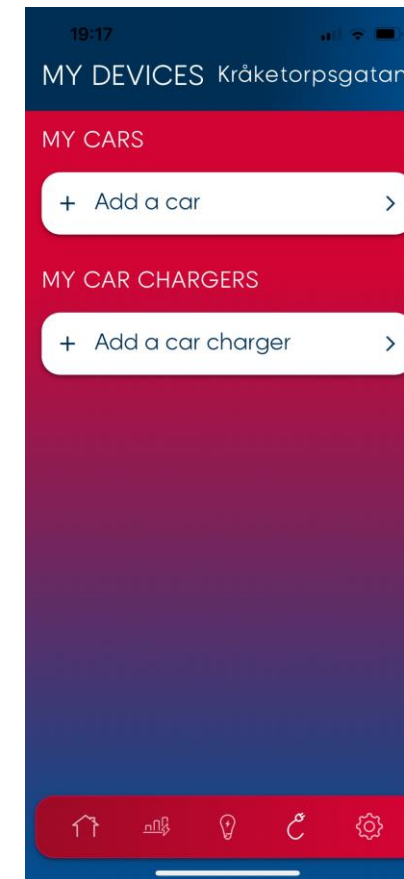
QUIPOWER NODES

Complement your QuiPower system with our QuiPower Node to be able to control your high-energy consumers in your home. [Read more]

ARTICLES

Support services

storage in their property and battery can be used to store solar



19:17

MY DEVICES Kråketorpsgatan

MY CARS

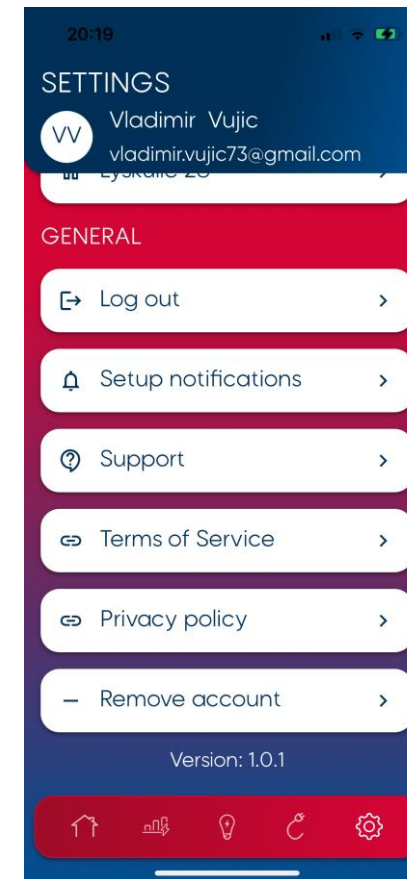
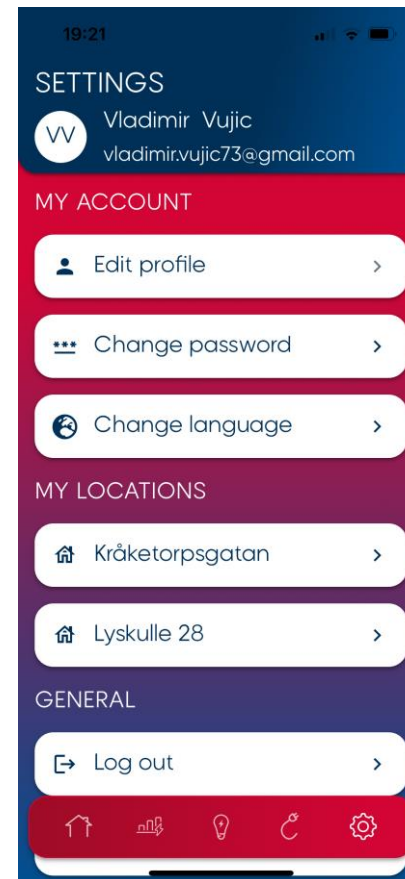
+ Add a car

MY CAR CHARGERS

+ Add a car charger

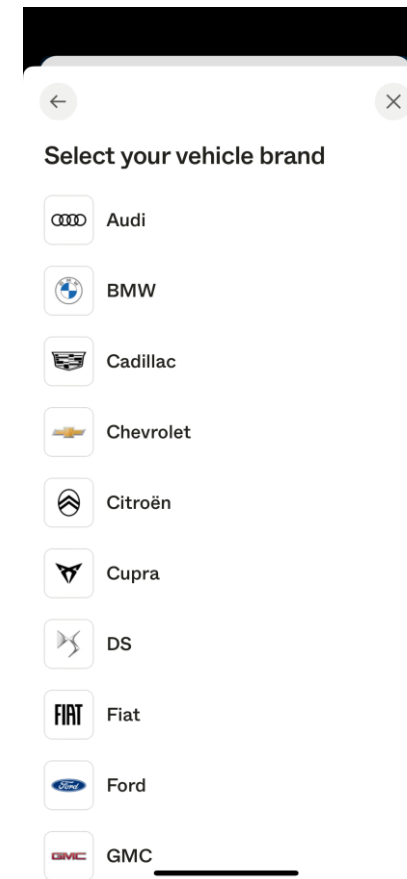
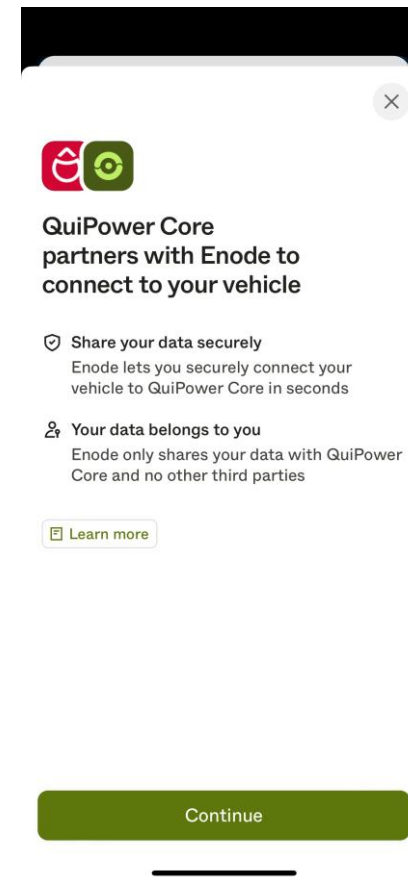
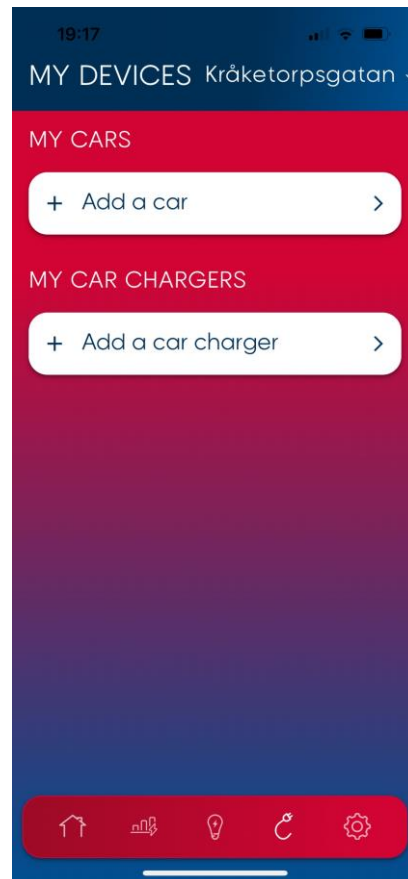
## QuiPower app

- End user
  - SETTINGS offers possibility manage your account, locations and review general information



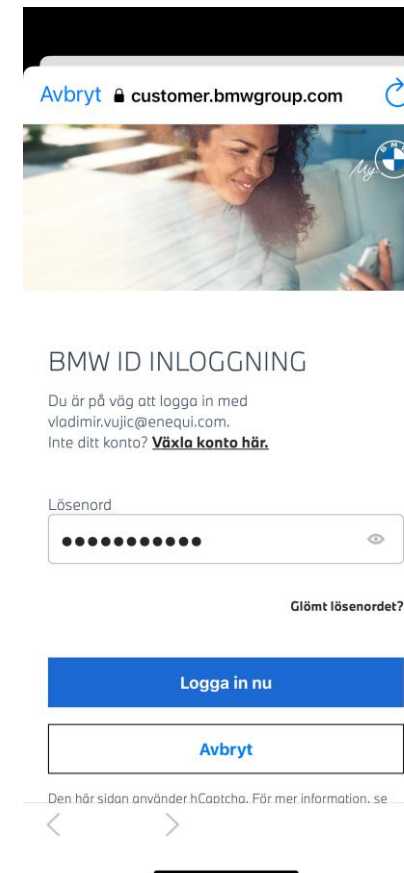
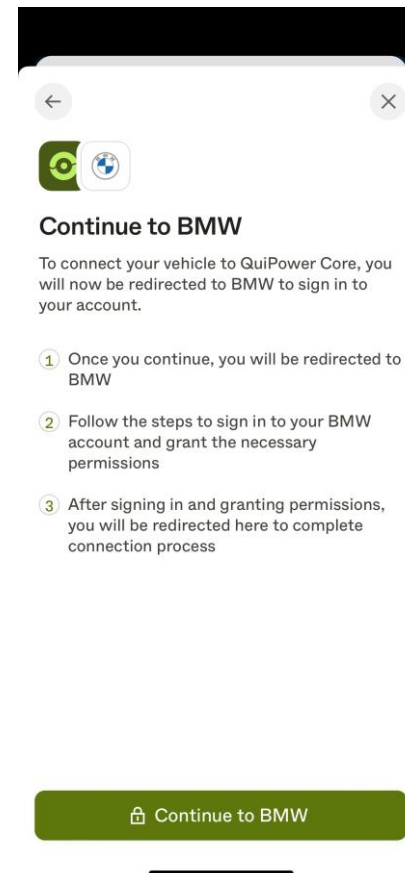
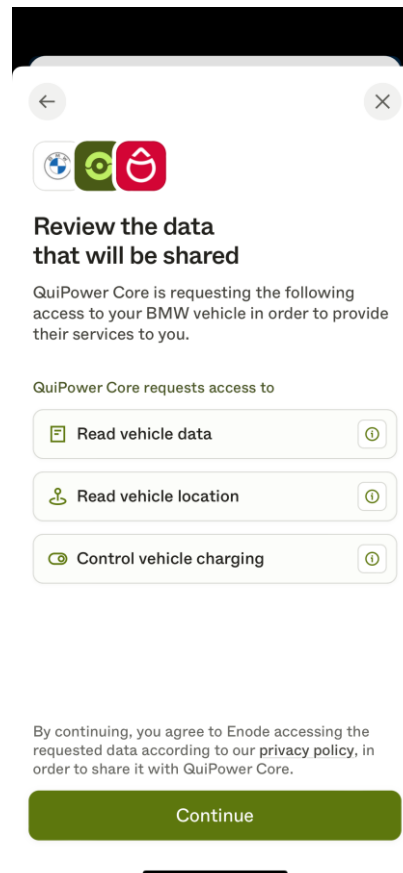
## My devices

- [Back](#)
- End user
  - Tap on **Add a car**
  - Tap on Continue
  - Select your vehicle brand by tapping on brand logo



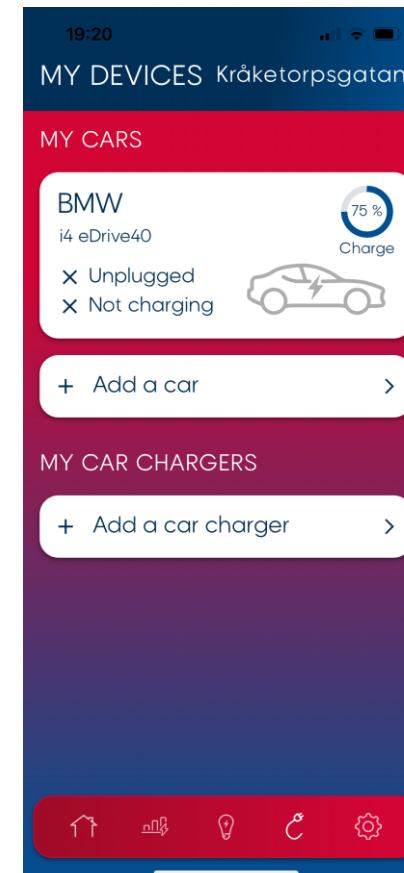
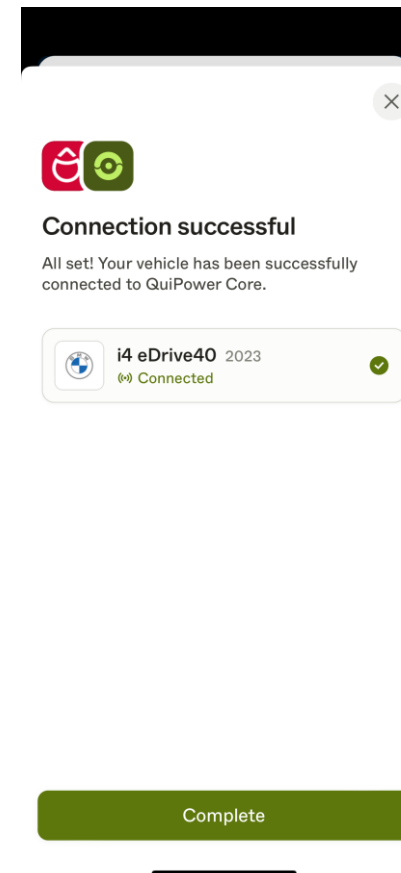
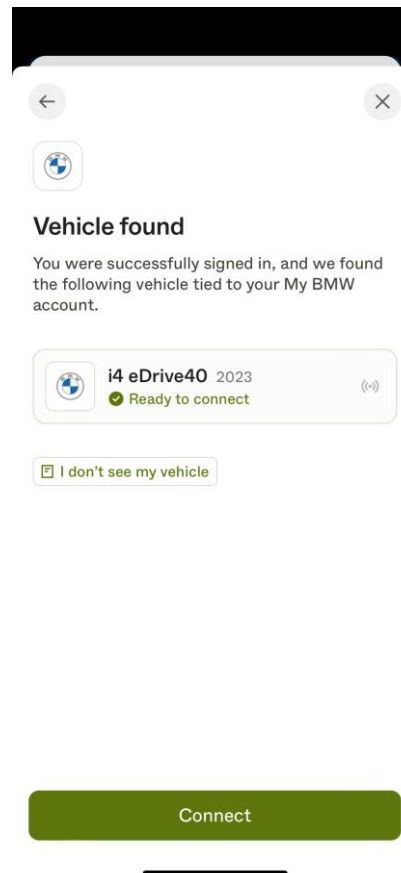
## My devices

- [Back](#)
- End user
  - Review the data that will be shared
  - Tap on Continue
  - Tap on Continue to your vehicle brand
  - Log in with same credentials you are using for your vehicle brand app



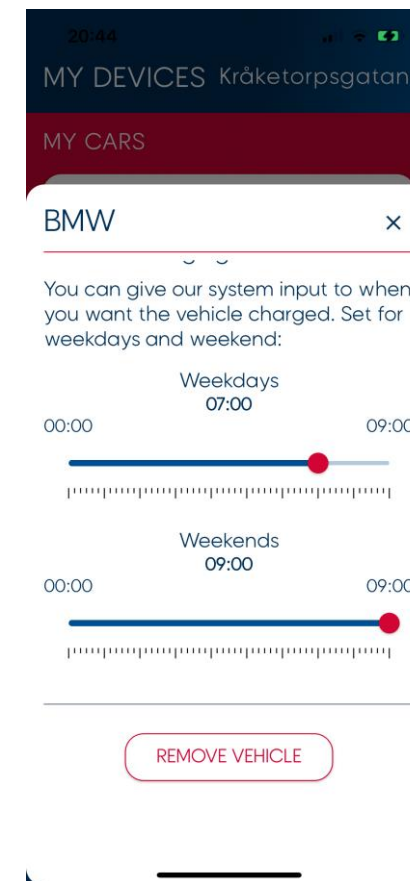
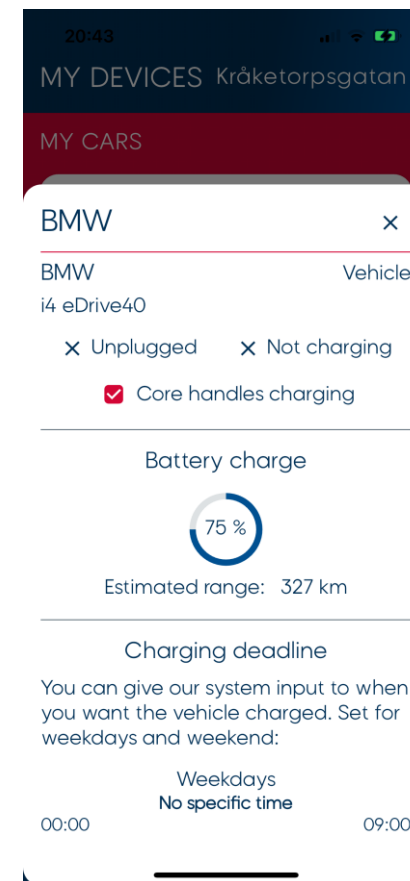
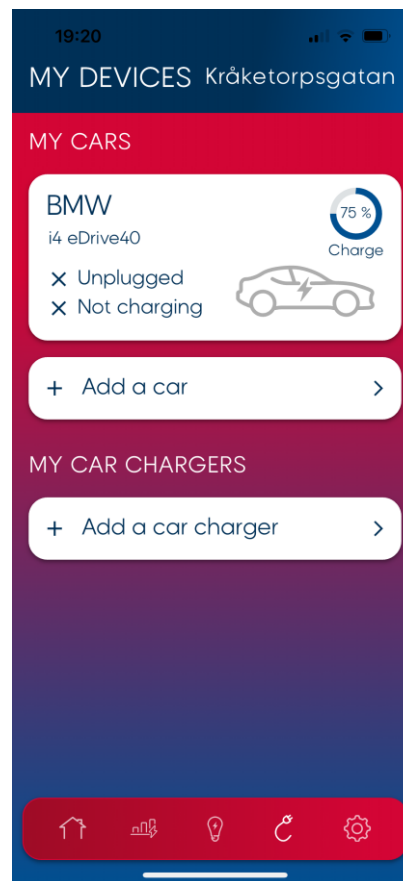
## My devices

- [Back](#)
- End user
  - Verify your vehicle
  - Tap on Connect
  - Tap on Complete
  - Your car charging is now controlled by Core device



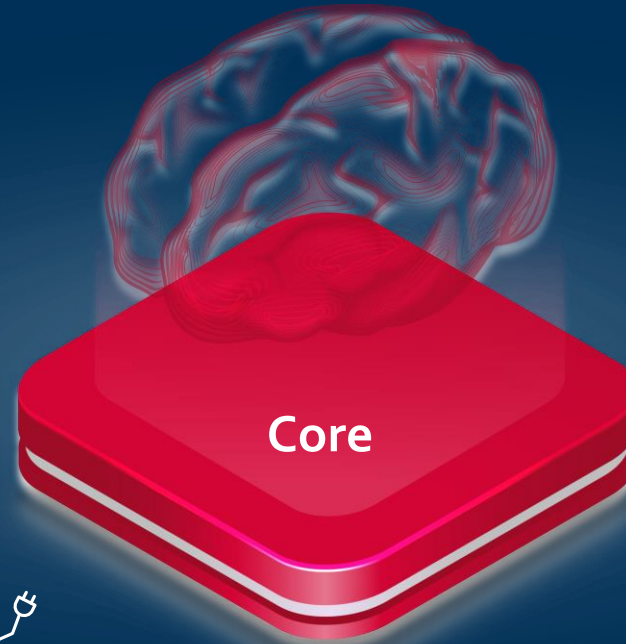
## My devices

- [Back](#)
- End user
  - Tap on your car icon
  - Enable or disable Core control of charging session  
Core control is enabled automatically each time care is connected to charger at Core device installation address
  - Manually start or stop charging session  
Core control is disabled automatically each time you manually override charging session
  - Set expected charging end time for weekdays and/or weekends  
If charging end time is used Core will optimize charging intervals to lowest price hours at Nordpool stock.
  - If charging end time is not used Core will optimize charging intervals to below average price hours at Nordpool stock.



# Core – The brain of the property

Building tomorrow's forecast on historical data



## Weather Optimization

With QuiPower's integrated weather function, you avoid all manual decisions. The service optimizes electricity usage considering upcoming weather conditions. This increases your self-sufficiency and reduces the need for purchased electricity.

## Peak-Shaving

By monitoring power usage in real-time and dynamically reducing peak loads using stored energy and load management, grid fees can be reduced.

## Tariff management

Reduce grid costs by automatically controlling energy consumption in the property to times outside the tariff intervals, without compromising the comfort of the property.

## Electric Prize Optimization – Nord Pool

Just like stocks are bought on the stock exchange, electricity is purchased at an hourly rate on the electricity exchange. With active electricity trading, the electricity bill is reduced by minimizing energy usage when it is expensive and prioritizing it when it is favorable.

<sup>1</sup> Tillägg

<sup>2</sup> Implementeringsfas

## Electric Price Optimization – Nord Pool

### Control of Comfort Energy



Control and manage all lighting and every appliance in the property with QuiPower energy nodes. With automation and lighting control, energy comfort is created in everyday life via the app and switches.

### Control Property Energy Management

Automatic regulation of large energy consumers in the property and optimization of operating times through analysis of total energy consumption. This reduces your costs and the load on the power grid.



### Electric vehicle control



Enable faster and more cost-effective electric vehicle charging at home by automatically adjusting the charging power and timing, taking into account the energy usage in the rest of the house.

### Phase Balancing



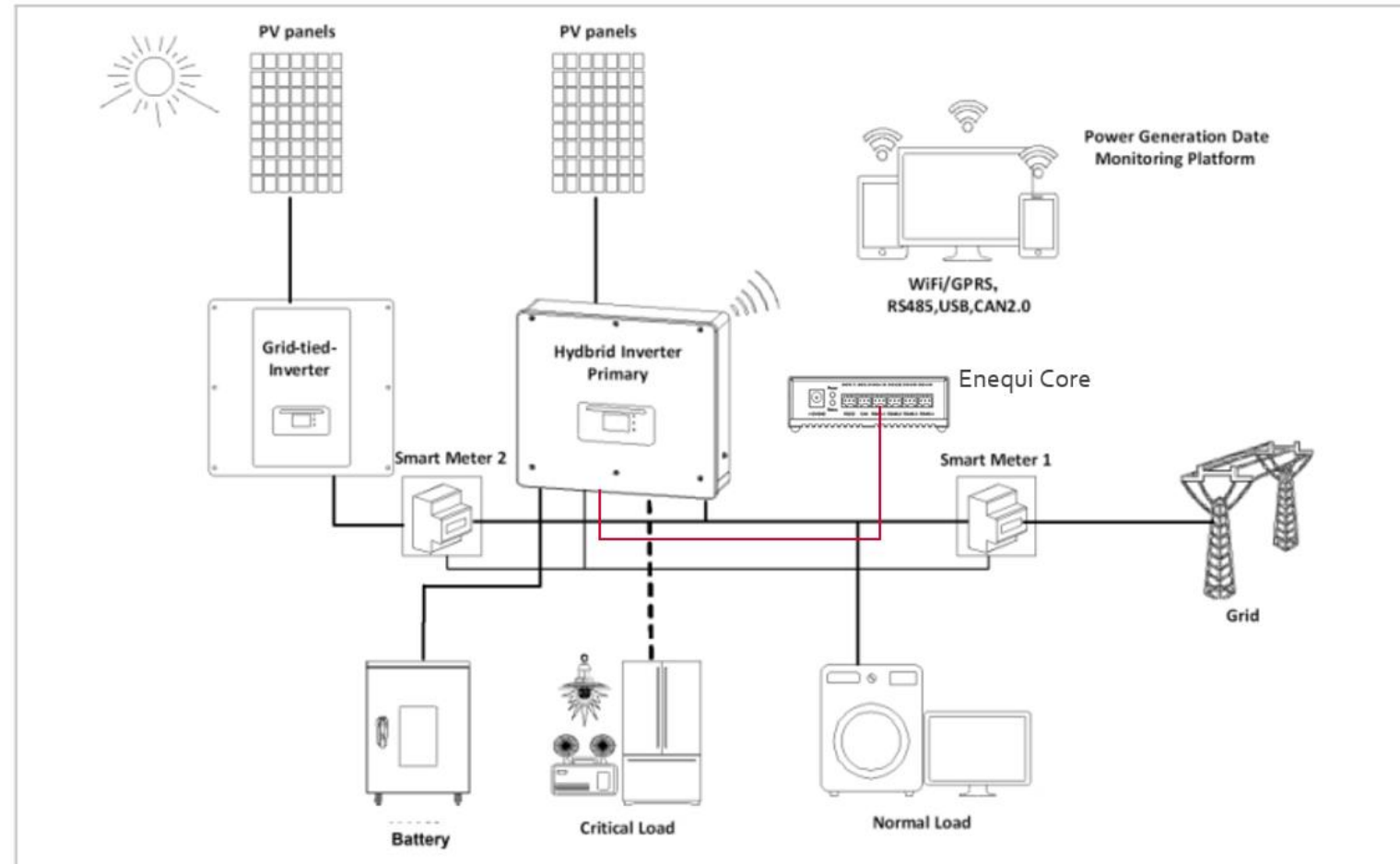
Avoid buying electricity when you don't need to. The three phases in the property are balanced to optimize the use of available energy and reduce the risk of having to buy and sell electricity at the same time.

<sup>1</sup> Tillägg

<sup>2</sup> Implementeringsfas

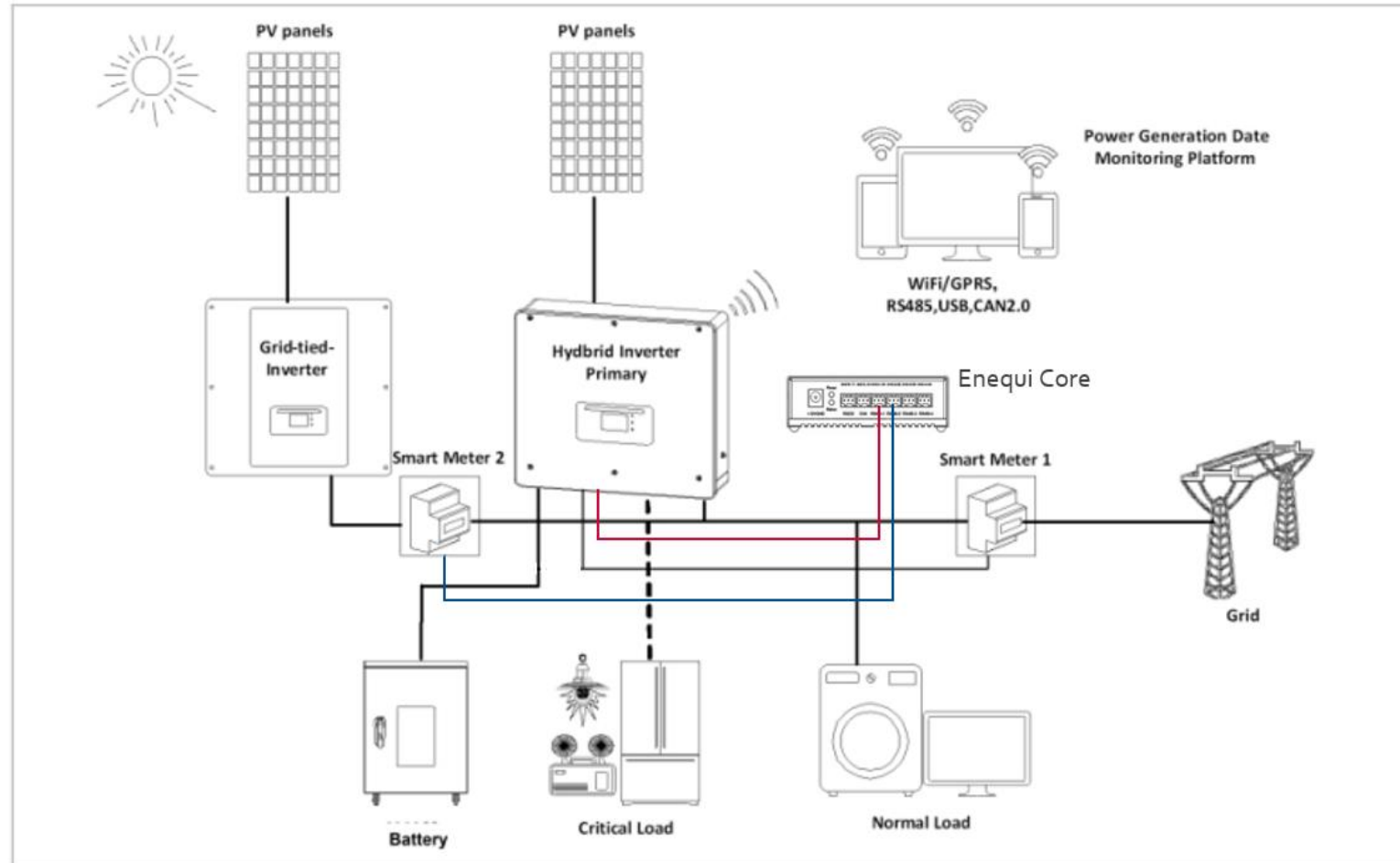
## Retrofit installation

- [Back](#)
- Inverter supports retrofit installation
  - Connect grid smart meter to primary inverter
  - Connect production smart meter to same communication interface on primary inverter as grid smart meter
  - Connect Core device to EMS interface on primary inverter



## Retrofit installation

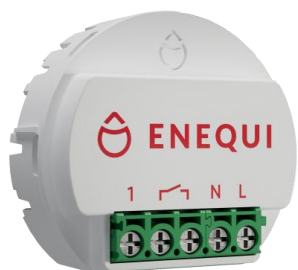
- [Back](#)
- Inverter without support for retrofit installation
  - Connect grid smart meter to primary inverter
  - Connect production smart meter to Core unit RS485 -2 port
  - Connect Core device to EMS interface on primary inverter



## QPN mesh

- [Back](#)

QPN-R1  
QuiPower Node Relay



QPN-MB  
QuiPower Node Mounting Bracket

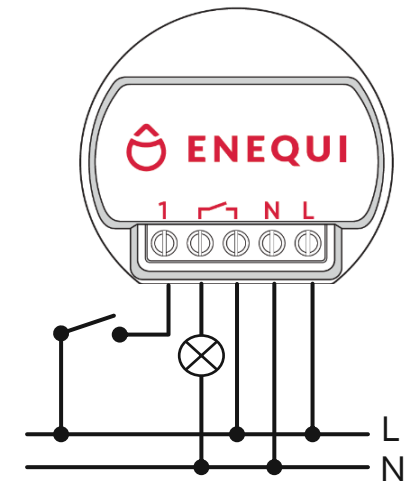


QPN-B  
QuiPower Node Bridge



## QPN mesh

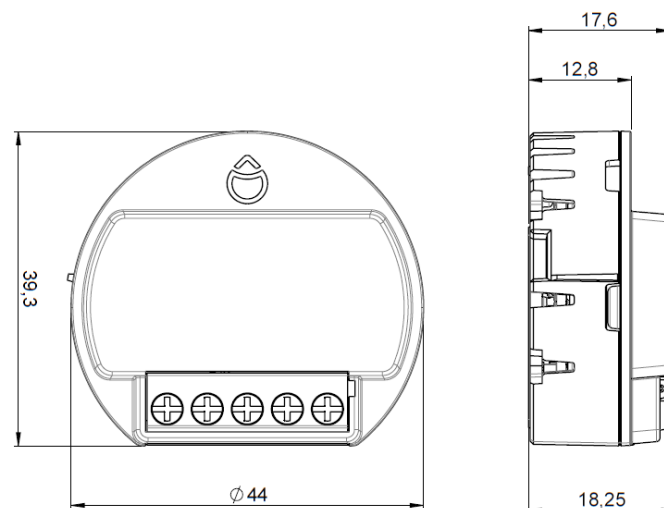
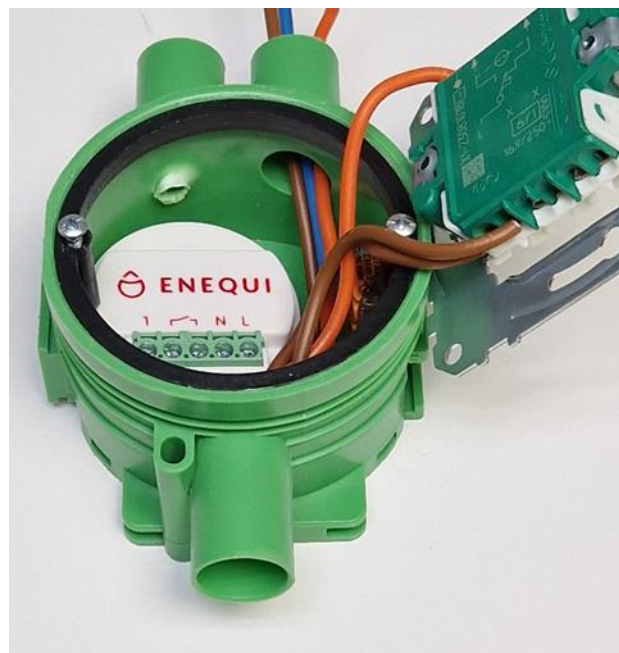
- Back
  - Intelligent load- & lighting control
    - 16 A resistive load
  - Use as a stand-alone or as part of the QuiPower Platform
    - Comfort control at home
    - Energi control together with QuiPower Core
  - One of the smallest dimensions on the market
  - Stand-alone or in a mesh network
    - Bluetooth MESH
  - Built-in backup battery
  - Timer
  - Weekly schedule
  - Astro function (sunrise/sunset)



## QPN mesh

- [Back](#)

One of the smallest dimensions on the market

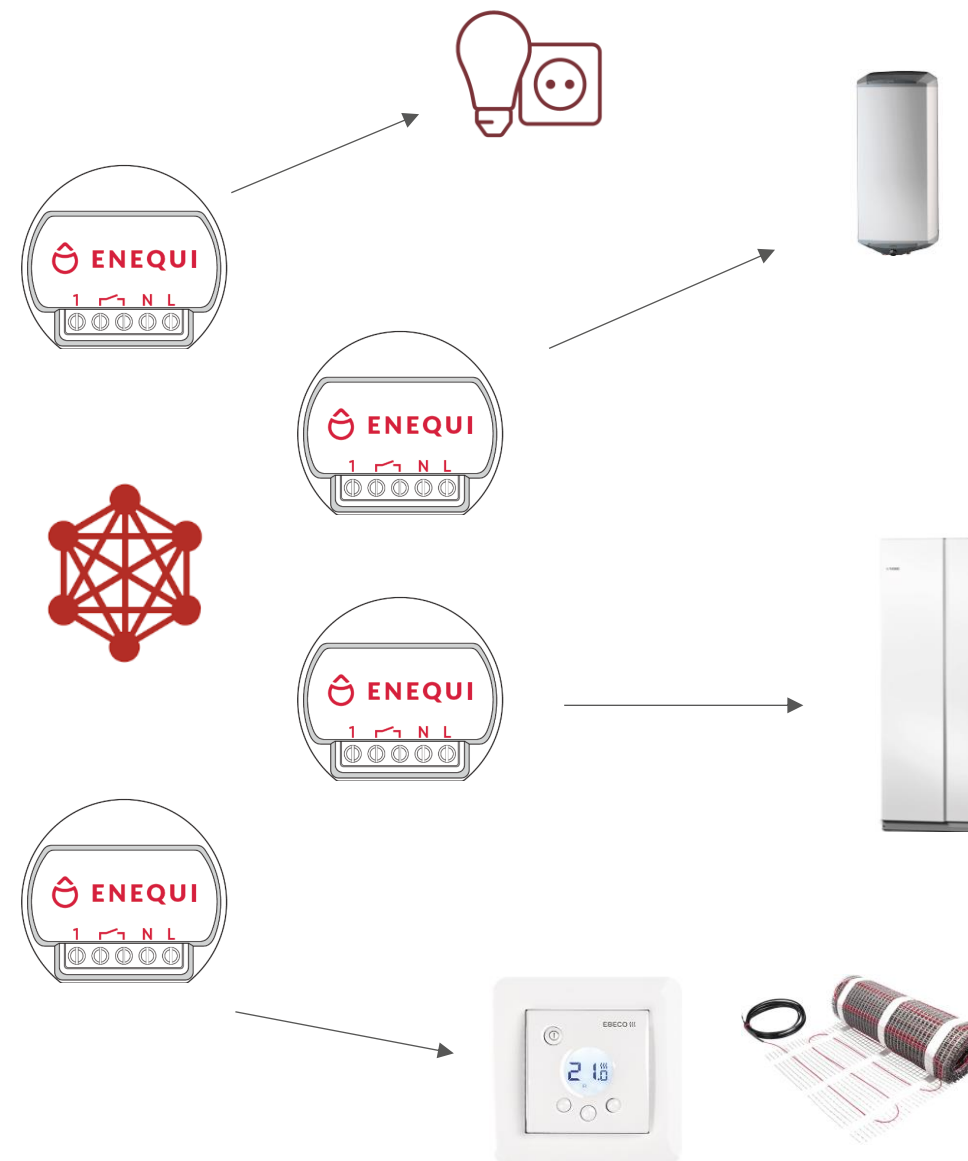
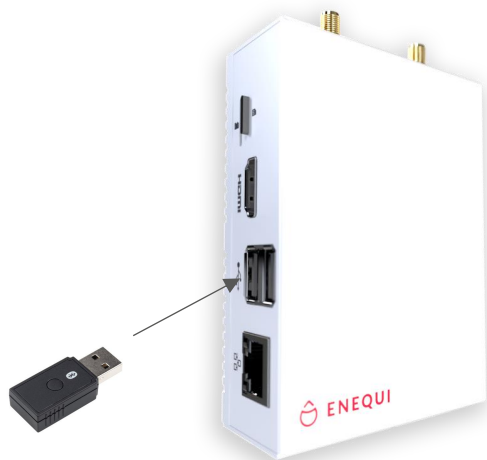


Only one module width on the DIN rail



## QPN mesh

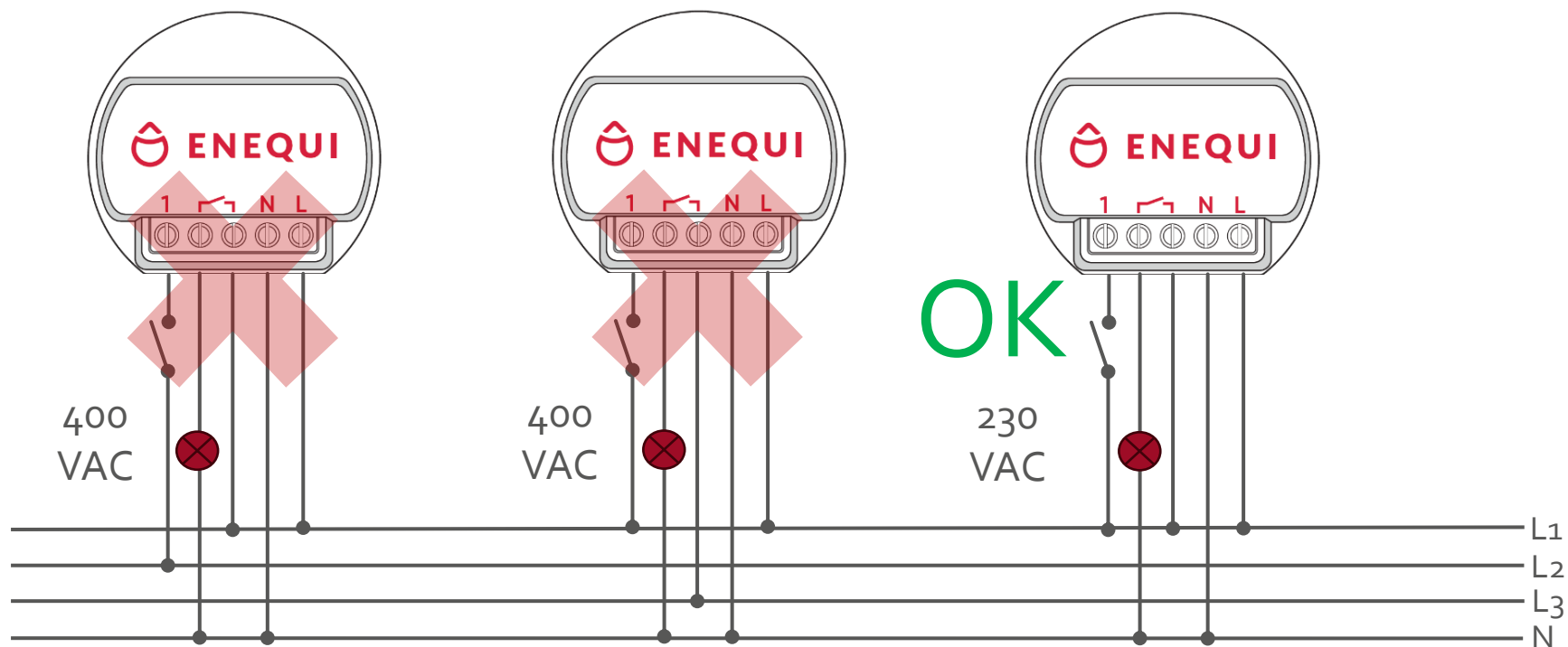
- [Back](#)
- Installer
  - Connect QPN-bridge to desired USB output
  - Power up QPN-R1 nodes



## QPN mesh

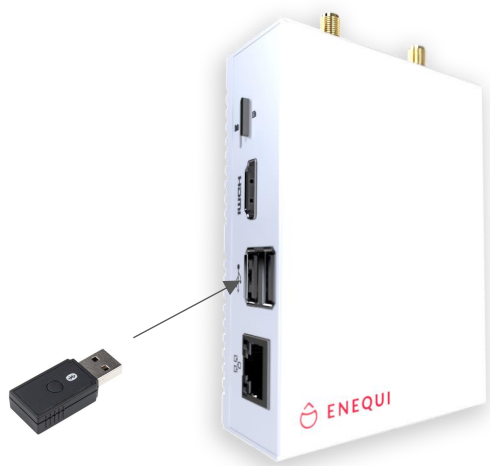
- [Back](#)

- QPN-R1 connection to electrical installation
- Always use the same phase for supply, push button input and for load to avoid 400 VAC across the connections



# QPN mesh

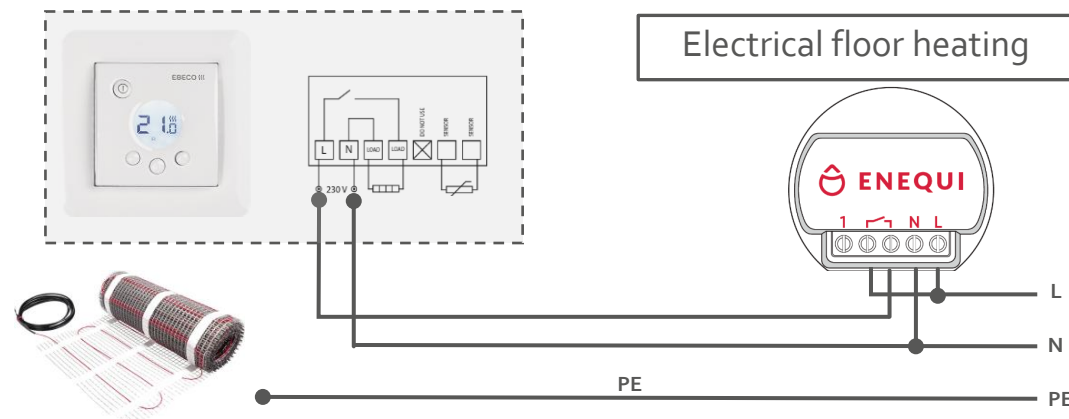
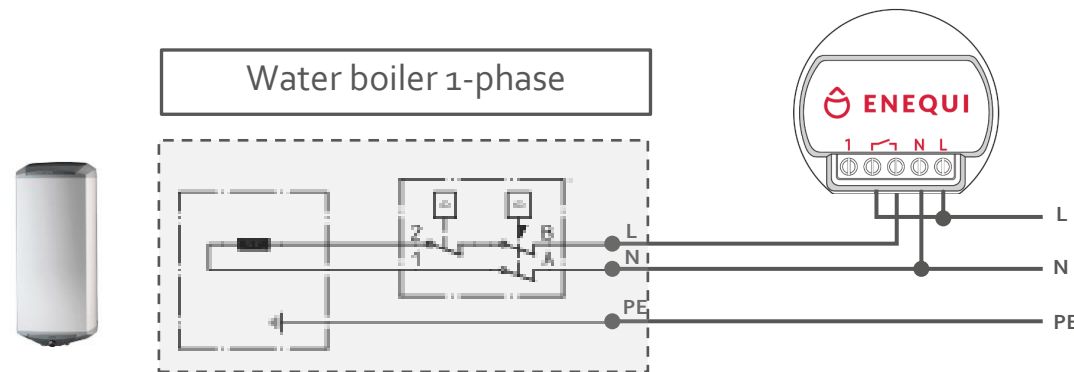
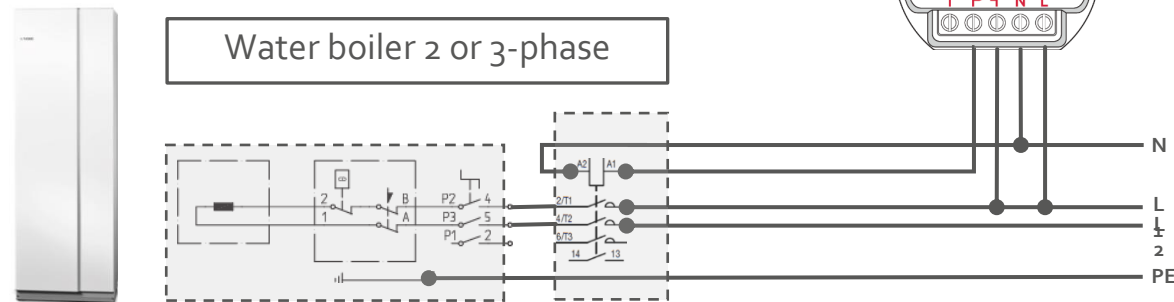
- Back



Bluetooth mesh

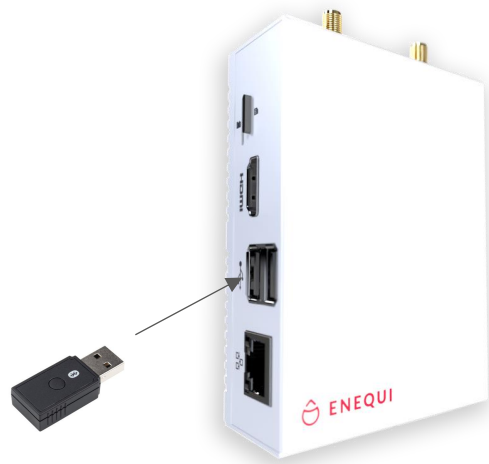


- Control of various electrical loads from QPC G2



# QPN mesh

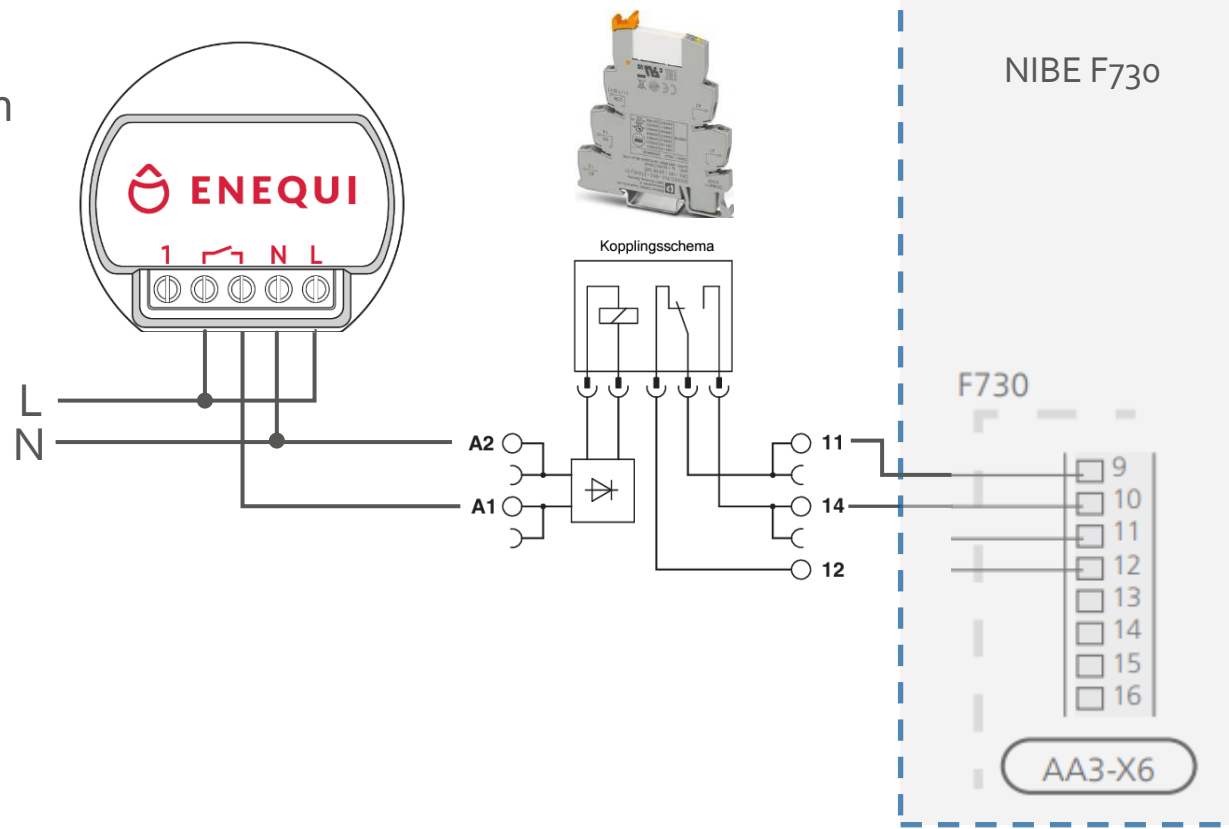
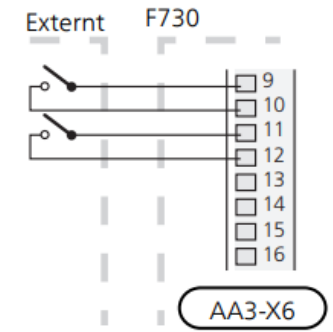
- [Back](#)



Bluetooth mesh



- Connection to heat pump for example blocking or SG-ready functions
- Always use external control relay for galvanic separation
- Follow heat pump user manual during installation



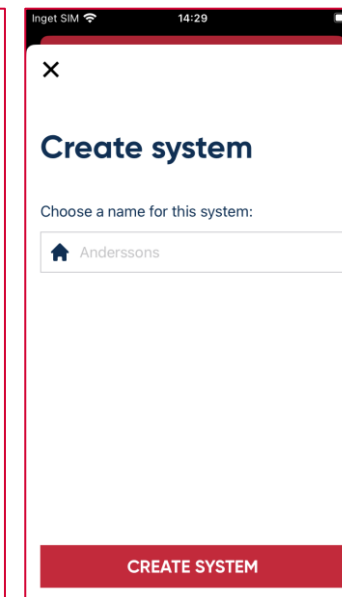
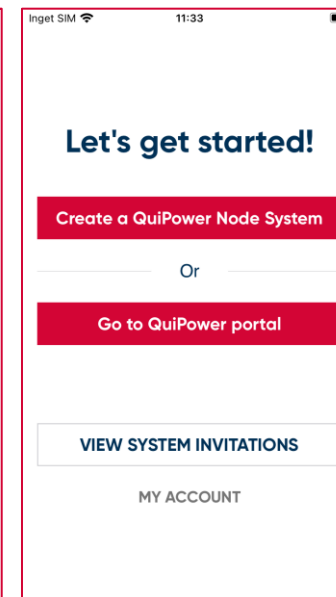
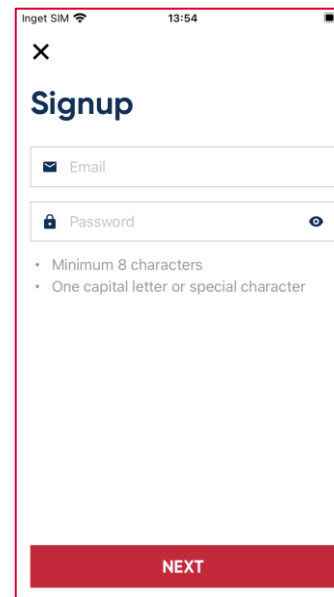
## QPN mesh

- [Back](#)
- Installer
  - Download QuiPower Node app to your smart phone



## QPN mesh

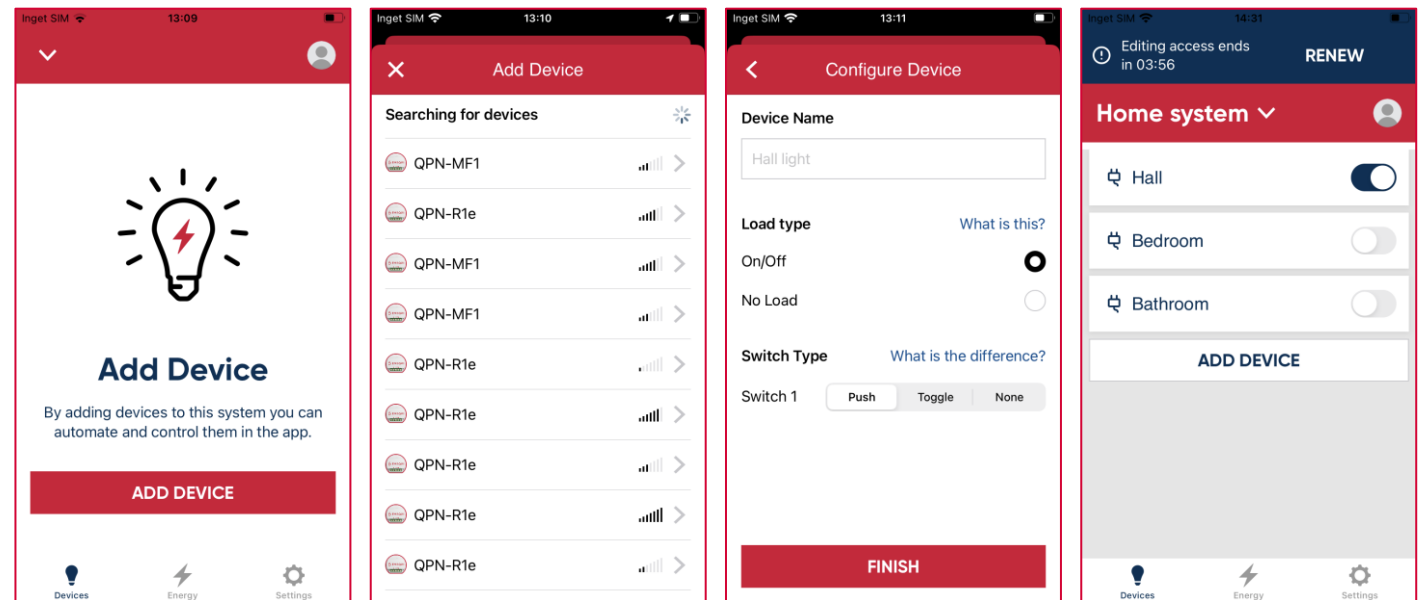
- [Back](#)
- Installer
  - Sign up for first time
  - Create a QuiPower Node System
  - Follow instructions to create mesh system



# QPN mesh

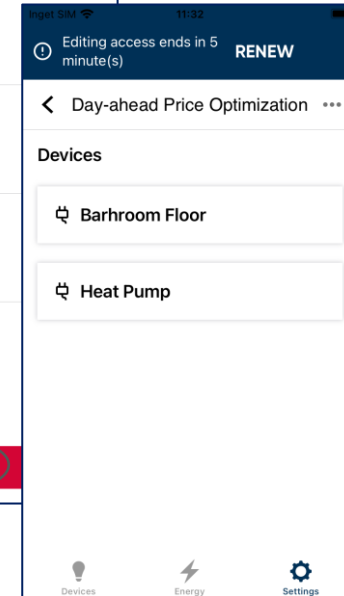
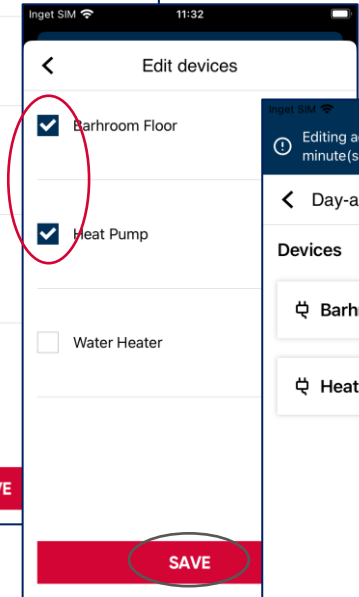
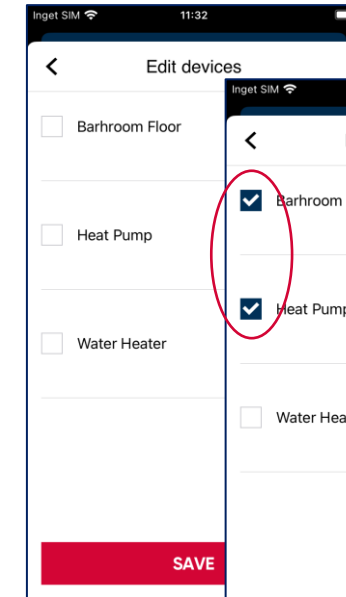
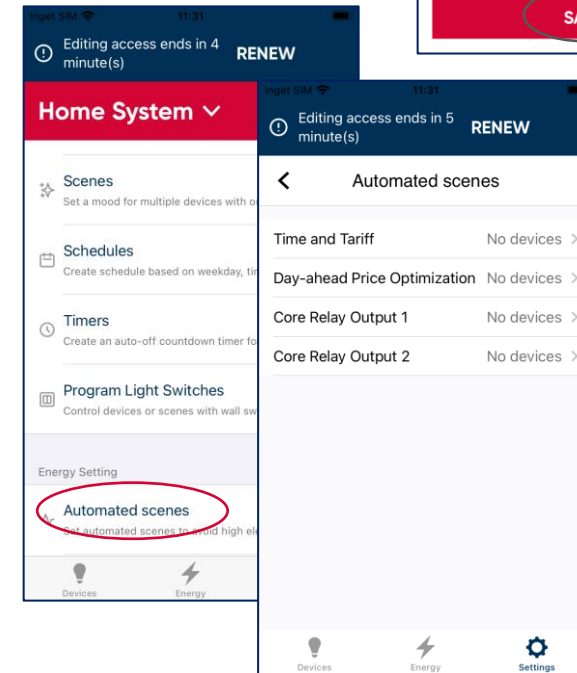
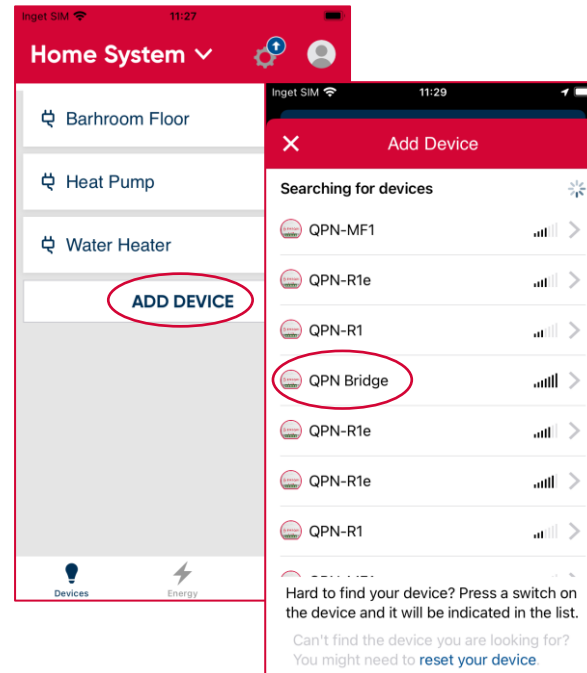
- [Back](#)
- Installer
  - Tap on ADD DEVICE to scan mesh network
  - Tap on desired QPN-R1 to configure device
  - Follow instructions to configure device and tap on FINISH

QPN-R1



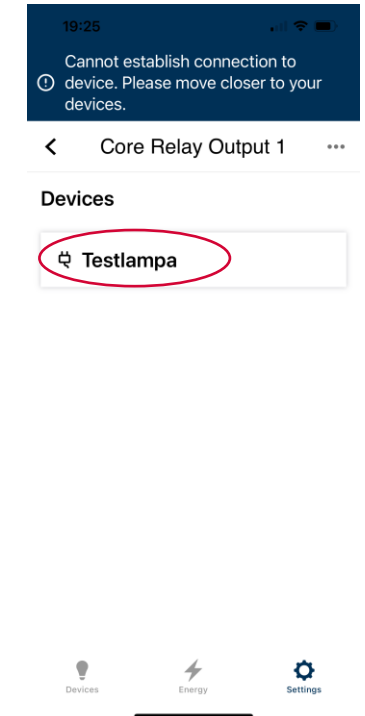
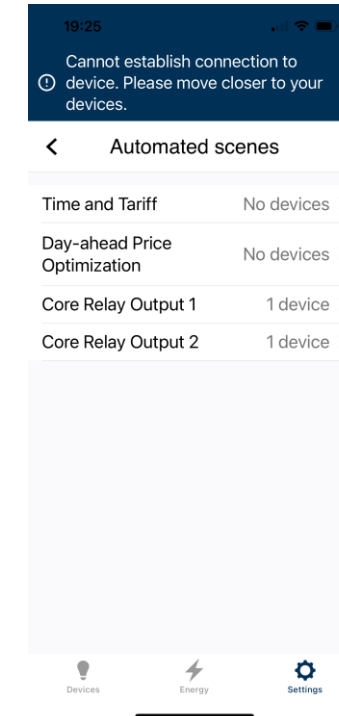
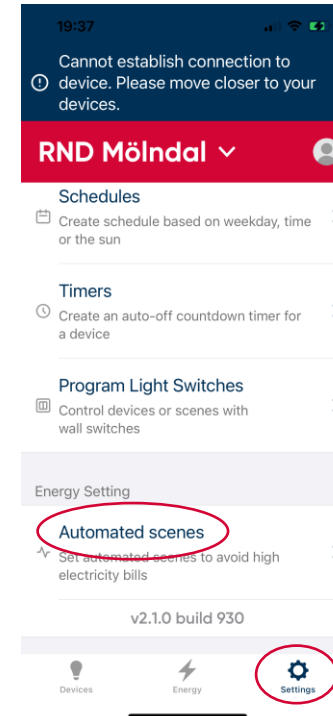
# QPN mesh

- [Back](#)
- Installer
  - Tap on ADD DEVICE to scan mesh network
  - Tap on QPN-Bridge to add device
  - Switch to settings
  - Tap on Automated scenes and add device to desired predefined function
  - Tap on SAVE
  - Core Relay Output 1 & 2 have optional functions that must be chosen during [onboarding process](#)



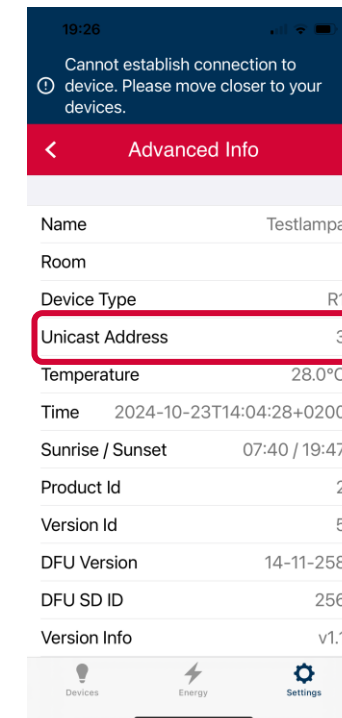
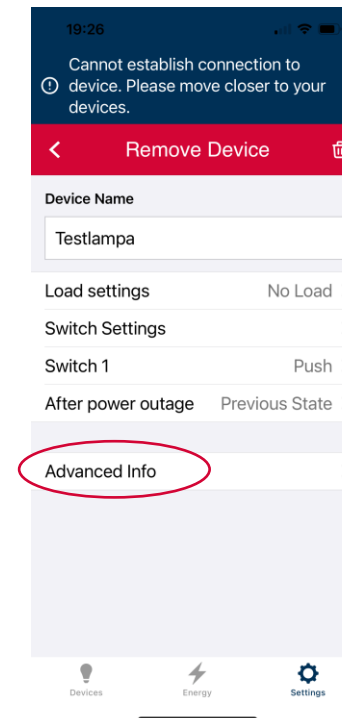
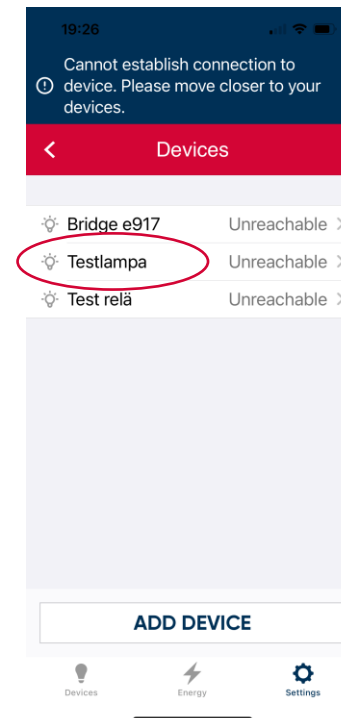
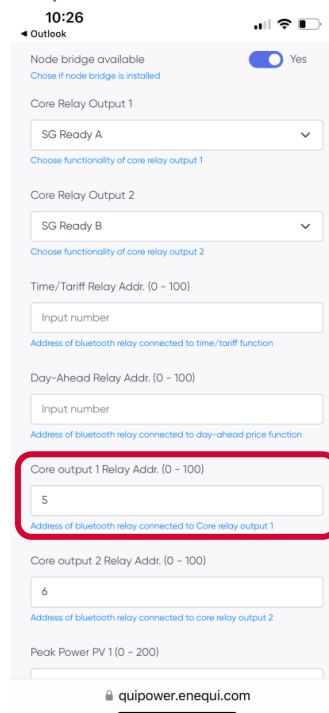
## QPN Unicast address

- [Back](#)
- Installer
  - Switch to settings
  - Tap on Automated scenes and choose desired predefined function to check the name of added device
  - Remember the name of added device



# QPN Unicast address

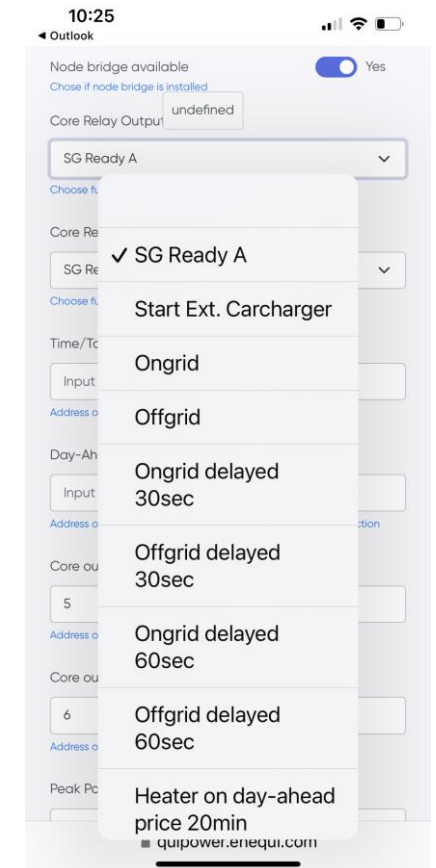
- Back
- Installer
  - Move back to Settings menu and choose Devices
  - Tap on device name you remembered from desired predefined function
  - Tap on Advanced info
  - Write Unicast Address to corresponding predefined function address field



# Automated scenes function description

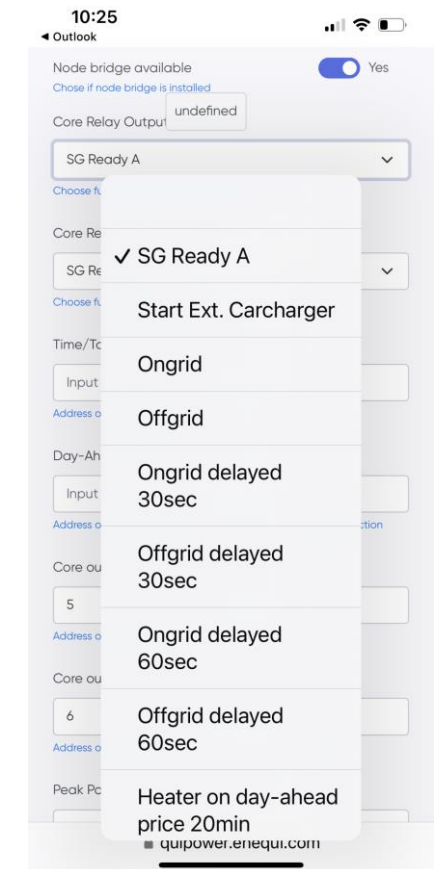
- [Back](#)
- Time and Tariff
  - Automated scene is OFF during tariff time and ON during off-tariff time
  - Tariffs are determined by grid owners
- Day-ahead Price Optimization
  - Automated scene is OFF during high price (above average) and ON during low price (below average) at Nordpool stock.
- SG-ready
  - SG Ready, introduced in 2012 by the German heat pump association BWP, Bundesverband Wärmepumpe, with 17 manufacturers, certifies that certain heat pumps and related technologies can adapt to specific external control signals. The label facilitates heat pump control based on price signals and grid status, enhancing grid support, reducing carbon footprints, and ensuring cost-effective operation.

	Blocked operation Mode 1	Normal operation Mode 2	Encouraged operation Mode 3	Ordered operation Mode 4
SG Ready	Activated	Deactivated	Activated	Activated
SG-Ready A Relay Output 1	Closed (1)	Open (0)	Open (0)	Closed (1)
SG-Ready B Relay Output 2	Open (0)	Open (0)	Closed (1)	Closed (1)



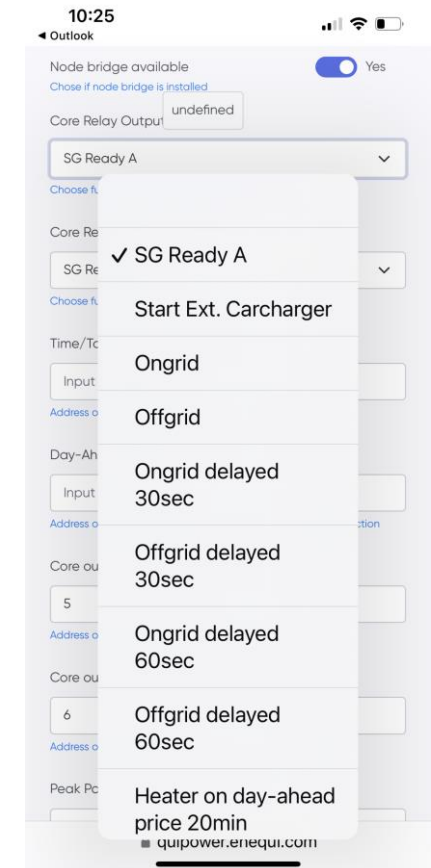
## Automated scenes function description

- [Back](#)
- Start Ext. Carcharger
  - This feature enables control of external charging boxes based on price signals and grid status. It provides a strategic cost control method, allowing a QuiPower Core to manage charging periods in response to Day-ahead prices or power peaks by activating or deactivating a charging box. Tariffs are determined by grid owners.
  - Automated scene is ON during low price (below average) and/or consumption is below forecasted power peak
- Ongrid
  - Automated scene is ON when primary inverter is in On-grid mode
- Offgrid
  - Automated scene is ON when primary inverter is in Off-grid mode
- Ongrid delayed 30sec
  - Automated scene switch to ON with 30 seconds delay from the moment primary inverter change to On-grid mode
- Offgrid delayed 30sec
  - Automated scene switch to ON with 30 seconds delay from the moment primary inverter change to Off-grid mode



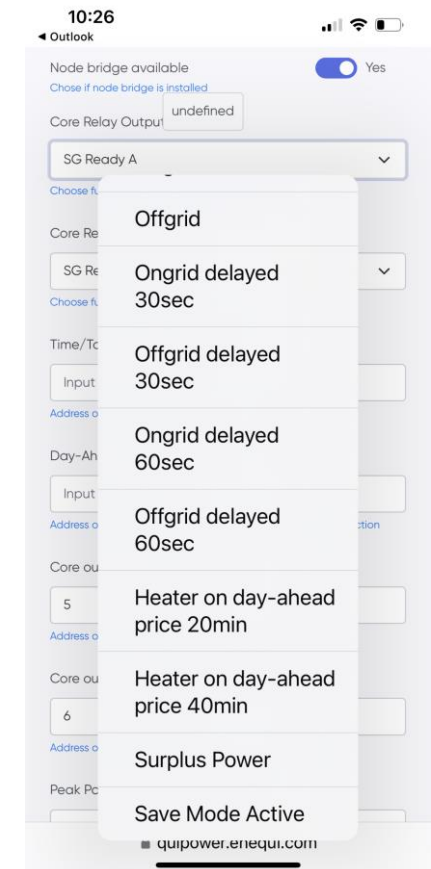
## Automated scenes function description

- [Back](#)
- Ongrid delayed 60sec
  - Automated scene switch to ON with 60 seconds delay from the moment primary inverter change to On-grid mode
- Offgrid delayed 60sec
  - Automated scene switch to ON with 60 seconds delay from the moment primary inverter change to Off-grid mode
- Heater ON day-ahead price 20min
  - Automated scene is ON for 20 minutes during high price (above average) at Nordpool stock, in each high price hour and OFF for 40 minutes.
  - Automated scene is ON for all hours during low price (below average) at Nordpool stock.
- Heater ON day-ahead price 40min
  - Automated scene is ON for 40 minutes during high price (above average) at Nordpool stock, in each high price hour and OFF for 20 minutes.
  - Automated scene is ON for all hours during low price (below average) at Nordpool stock.



## Automated scenes function description

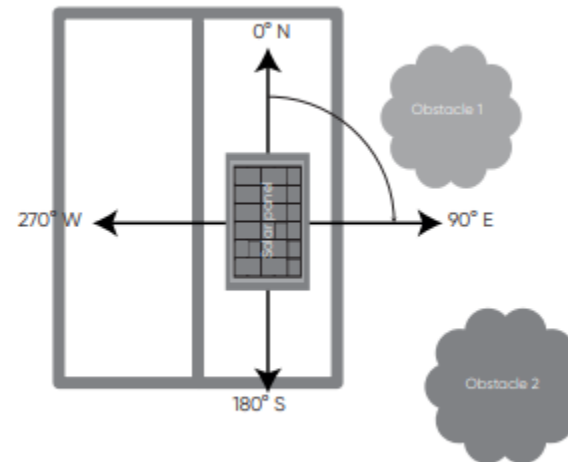
- [Back](#)
- Surplus Power
  - Automated scene switch to ON with 5 minutes delay from the moment power export to grid is > setting for heat pump power (default: 2300W )
  - Automated scene switch to OFF from the moment power import from grid is > setting for heat pump power/2 (default: 1150W )
  - Automated scene switch to OFF from the moment battery discharge power is > setting for heat pump power/4 (default: 600W )
- Save Mode Active
  - This feature enables control of older heat pump based on price signals and grid status. It provides a strategic cost control method, allowing a QuiPower Core to manage second heating setpoint in response to Day-ahead prices or power peaks by activating or deactivating a designated heat pump input. Tariffs are determined by grid owners.
  - Automated scene is ON during low price (below average) and/or consumption is below forecasted power peak



## PV setup

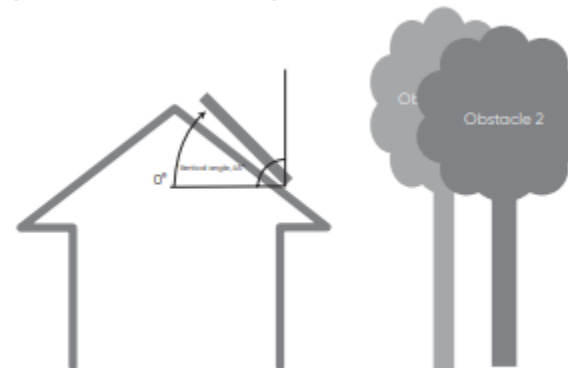
- [Back](#)
- Peak Power
  - Rated power output of the solar panels
- Direction PV
  - Cardinal direction of solar panels
- Inclination PV
  - Vertical angle between solar panel and horizontal plane.

**Direction angle:** cardinal direction of solar panels.



*In this example, the direction of the solar panel is 90°.*

**Vertical angle:** vertical angle between solar panel and horizontal plane.



*In this example, the vertical angle of the solar panel is 45°.*

10:27  
 Outlook

Peak Power PV 1 (0 - 200)  
  
Installed PV power in direction 1 (kWp)

Direction PV 1 (0 - 359)  
  
0° - North, 90° - East, 180° - South, 270° - West

Inclination PV 1 (0 - 90)  
  
Angle between horizontal plane and panels (°)

Peak Power PV 2 (0 - 200)  
  
Installed PV power in direction 2 (kWp)

Direction PV 2 (0 - 359)  
  
0° - North, 90° - East, 180° - South, 270° - West

Inclination PV 2 (0 - 90)  
  
Angle between horizontal plane and panels (°)

SAVE

quipower.enequi.com

Thank you



**ENEQUI**

Take charge